

Kite

CATALOGUE 10.1 2016

OFFROAD
SPECIAL
PARTS



#25 MARVIN MUSQUIN
250 SUPERCROSS CHAMPION



#5 RYAN DUNGEY
450 SUPERCROSS CHAMPION
450 NATIONAL CHAMPION



#461 ROMAIN FEBVRE
MXGP WORLD CHAMPION

AT THE TOP ONCE AGAIN

KITE-PARTS.COM



INDICE

INDEX

Dischi freno / Brake discs MX-EN AIR	p. 4
Supporti pinza freno / Brake caliper brackets	p. 6
Dischi freno / Brake discs SPORT	p. 8
Dischi freno pieni / Full brake discs	p. 9
Ruote / Wheels MX-EN ELITE	p. 10
Ruote / Wheels MX-EN SPORT	p. 12
Ruote / Wheels SM ELITE	p. 14
tube type – <i>alpina</i> TUBELESS STS	
Mozzi / Hubs ELITE	p. 16
Mozzi / Hubs SPORT	p. 18
Adattatore mozzo Honda / Honda hub adapter	p. 19
Distanziali esterni / External spacers	p. 20
Dado ferma copertone / Rimlock nut	p. 20
Cerchi / Rims MX-EN-SM	p. 21
Flap	p. 21
Kit raggi + nipples / Spokes + nipples kit	p. 22
Kit ricambi cuscinetti / Bearings replacement kit	p. 22
Mousse e accessori / Mousses and accesories	p. 24
Pedane e ricambi / Foot pegs and replacements MX-EN-SM	p. 26
Piastre forcella / Triple clamps MX-EN	p. 28
Ghiere piastre forcella / Triple clamps nuts	p. 29
Piastre superiori / Upper plate MX-EN	p. 30
Piastre forcella / Triple clamps SM	p. 32
Attacchi manubrio / Handlebar clamps MX-EN-SM-OEM	p. 34
Manubri / Handlebars	p. 37
Dispositivo di partenza / Launch control	p. 38
Kit tubi silicone / Silicon hoses kit MX-EN-SM	p. 40
Scambiatori di calore / Heat exchangers	p. 41
NEW! Kit moto / Bike kit	p. 42
Registri tendicatena / Axle blocks LIGHT - QUICK RACING	p. 44
Tappi e accessori motore / Engine caps and accessories	p. 46
Sfiato serbatoio benzina / Gas tank air vent	p. 48
Serbatoio recupero liquidi / Liquid recover tank	p. 48
Accessori carburatore Keihin / Keihin carburettor accessories	p. 49
Bracciali freno-frizione e Hot start Brake-clutch clamp and Hot start lever	p. 49
Accessori freno / Brake accessories	p. 50
Ruote TRIUMPH / TRIUMPH Wheels <i>alpina</i> TUBELESS STS	p. 52
Ruote BMW / BMW Wheels <i>alpina</i> TUBELESS STS	p. 54
Parti speciali BMW / BMW special parts	p. 54



legenda
legend

MX = MOTOCROSS
EN = ENDURO
SM = SUPERMOTARD
MC = MINICROSS

MXGP World Champion

ROMAIN FEBVRE

Yamaha Factory Racing



colori/colors:

AN = ANTRACITE/ANTHRACITE
AR = ARANCIONE/ORANGE
BL = BLU/BLUE
BR = BRONZO/BRONZE
GI = GIALLO/YELLOW
NO = NERO/BLACK
RO = ROSSO/RED
SI = ARGENTO/SILVER
TI = TITANIO/TITANIUM
VE = VERDE/GREEN

Prezzi al pubblico I.V.A esclusa.
Public price V.A.T. not included (€).

Prezzi riferiti al mercato italiano. Per mercati esteri i prezzi potrebbero subire variazioni.
Prices for the italian market. Prices for foreign markets may vary.

Kite s.r.l. si riserva di modificare senza preavviso prezzi, colori, forme e materiali.
Kite s.r.l. reserves to modify without prior notice prices, colors, forms and materials.

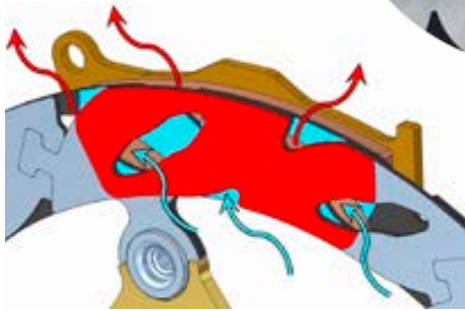
Le immagini sono puramente indicative e non rispettano per forza l'aspetto effettivo del prodotto.
The images are only indicative and don't reflect necessarily the exact shape of the product.

I prodotti in questo catalogo sono destinati alla sola attività sportiva e non possono essere utilizzati su strade pubbliche.
The products in this catalogue are intended only for race use, they must not be used on public roads.



dischi freno MX-EN

MX-EN brake discs



Disco autoventilante / Ventilante disc

Scarico del fango molto efficace / Easy cleaning of the mud

Superficie di scambio termico incrementata / Increased heat exchange surface

Costanza delle prestazioni anche dopo utilizzo prolungato (no effetto "leva spugnosa")
Constasy of performance even after long use (no "spongy" lever effect)

brand	model	cc	year	description	code	color	price		
BETA	RR	tutte/all (no 50/125 4t)	13 ...	anteriore/front floating ø260mm	33.030.1	BR/BL/RO	197,00		
HONDA	CR/CRF	125/250/450	95 ...	anteriore/front floating ø270mm	33.010.0	BR/RO	197,00		
			95 ...	anteriore/front floating ø260mm	33.010.1				
			95 14	anteriore/front fix ø240mm	33.014.0	139,00			
			95 ...	posteriore/rear fix ø240mm	33.015.0	139,00			
YAMAHA	YZ/YZF/WR/WRF	125/250/450	02 ...	anteriore/front floating ø270mm	33.020.0	BR/BL	197,00		
	WRF	450	02 15	anteriore/front floating ø260mm	33.020.1	BR/BL			
				anteriore/front fix ø250mm	33.023.0	139,00			
	YZF	250/450	02 15	anteriore/front floating ø260mm	33.020.1	BR/BL	197,00		
				anteriore/front fix ø250mm	33.023.0	139,00			
				YZ/WR/WRF	125/250	02 ...	anteriore/front floating ø260mm	33.020.1	BR/BL
anteriore/front fix ø250mm				33.023.0	139,00				
YZ/YZF/WR/WRF	125/250/450	02 ...	posteriore/rear fix ø245mm	33.025.0		139,00			
KTM	SX/SXF/EXC/EXCF	tutte/all (no 85/65/50)	98 ...	anteriore/front floating ø270mm	33.030.0	AR/BL/BR	197,00		
				anteriore/front floating ø260mm	33.030.1				
				posteriore/rear fix ø220mm	33.035.0	139,00			
HUSQVARNA	TC/FC/TE/FE	tutte/all (no 85)	14 ...	anteriore/front floating ø270mm	33.030.0	AR/BL/BR	197,00		
				anteriore/front floating ø260mm	33.030.1				
				posteriore/rear fix ø220mm	33.035.0	139,00			
KAWASAKI	KX/KXF/KLX R	125/250/450	06 ...	anteriore/front floating ø270mm	33.040.0	BR/VE	197,00		
			06 14	anteriore/front floating ø260mm	33.040.1				
			03 ...	anteriore/front fix ø250mm	33.043.0	139,00			
SUZUKI	RM	125/250	89 ...	anteriore/front floating ø270mm	33.020.0	BR/BL	197,00		
				anteriore/front floating ø260mm	33.020.1				
				anteriore/front fix ø250mm	33.023.0	139,00			
	RMZ	250	04 06	posteriore/rear fix ø240mm	33.045.0		139,00		
				anteriore/front floating ø270mm	33.050.0	BR/RO	197,00		
				anteriore/front floating ø260mm	33.050.1				
				anteriore/front fix ø250mm	33.053.0	139,00			
				posteriore/rear fix ø240mm	33.055.0	139,00			
				450	05 ...	anteriore/front floating ø270mm	33.050.0	BR/RO	197,00
						anteriore/front floating ø260mm	33.050.1		
anteriore/front fix ø250mm	33.053.0	139,00							
posteriore/rear fix ø240mm	33.055.0	139,00							

AMA 450 Supercross Champion
AMA 450 National Champion
RYAN DUNGEY
Red Bull KTM Factory Racing





supporti pinza freno brake caliper brackets



Il supporto pinza freno posiziona correttamente la pinza per montare i dischi maggiorati ed è dotato di una protezione in materiale plastico ad alta resistenza che protegge la pinza dagli urti nei canali più profondi e dai sassi che si possono incontrare sui tracciati di motocross e di enduro.

The brake caliper bracket correctly positions the caliper to assemble oversized discs and is equipped with a high-resistance plastic protection that shields the caliper from shocks in the ruts and from the rocks that can be found on motocross and enduro tracks.

brand	model	cc	year	brake dimensions	code	color	price	
HONDA	CR/CRF	125/250/450	04 14	anteriore/front ø270mm	33.902.0	RO	77,00	
			04 14	anteriore/front ø260mm	33.904.0	RO/BL	77,00	
			04 ...	anteriore/front østandard	33.908.0	RO/BL	77,00	
			250/450 15 ...	anteriore/front ø270mm	33.906.0	RO/BL	77,00	
YAMAHA	YZ	125/250	08 ...	anteriore/front ø270mm	33.904.0	BL/RO	77,00	
				anteriore/front ø260mm	33.906.0	BL/RO	77,00	
				anteriore/front ø250mm	33.908.0	BL/RO	77,00	
	YZF	250	07 ...	anteriore/front ø270mm	33.904.0	BL/RO	77,00	
				07 15	anteriore/front ø260mm	33.906.0	BL/RO	77,00
				anteriore/front ø250mm	33.908.0	BL/RO	77,00	
YZF	450	08 ...	anteriore/front ø270mm	33.904.0	BL/RO	77,00		
			08 15	anteriore/front ø260mm	33.906.0	BL/RO	77,00	
			anteriore/front ø250mm	33.908.0	BL/RO	77,00		
SUZUKI	RM/RMZ	125/250/450	96 ...	anteriore/front ø270mm	33.910.0	RO/BL/VE	77,00	
				anteriore/front ø260mm	33.912.0	RO/BL/VE	77,00	
				anteriore/front ø250mm	33.914.0	RO/BL/VE	77,00	
KAWASAKI	KX/KXF/KLX R	125/250/250/300/450	95 ...	anteriore/front ø270mm	33.910.0	RO/BL/VE	77,00	
				anteriore/front ø260mm	33.912.0	RO/BL/VE	77,00	
				anteriore/front ø250mm	33.914.0	RO/BL/VE	77,00	
KTM	SX/SXF	tutte/all no 85	09 ...	anteriore/front ø270mm	33.916.0	AR/BL	77,00	
				anteriore/front ø260mm	33.918.0	AR/BL	77,00	
				04 12	posteriore/rear ø220mm	18.011.0	AR/BL	98,00
	EXC/EXCF	tutte/all	10 ...	posteriore/rear ø220mm	18.014.0	AR/BL	98,00	
				anteriore/front ø270mm	33.916.0	AR/BL	77,00	
				anteriore/front ø260mm	33.918.0	AR/BL	77,00	
HUSQVARNA	TC/FC/TE/FE	tutte/all no 85	14 ...	posteriore/rear ø220mm	18.011.0	AR/BL	98,00	
				anteriore/front ø270mm	33.916.0	AR/BL	77,00	
				anteriore/front ø260mm	33.918.0	AR/BL	77,00	
	TE/FE	tutte/all	14 ...	posteriore/rear ø220mm	18.011.0	AR/BL	98,00	
				14 15	posteriore/rear ø220mm	18.011.0	AR/BL	98,00
				16 ...	posteriore/rear ø220mm	18.014.0	AR/BL	98,00
SHERCO	SE/SEF	250/300	14 ...	anteriore/front ø270mm	33.916.0	BL	77,00	
			14 14	anteriore/front ø260mm	33.918.0	BL	77,00	

AMA 250 SX Champion
MARVIN MUSQUIN
Red Bull KTM Factory Racing

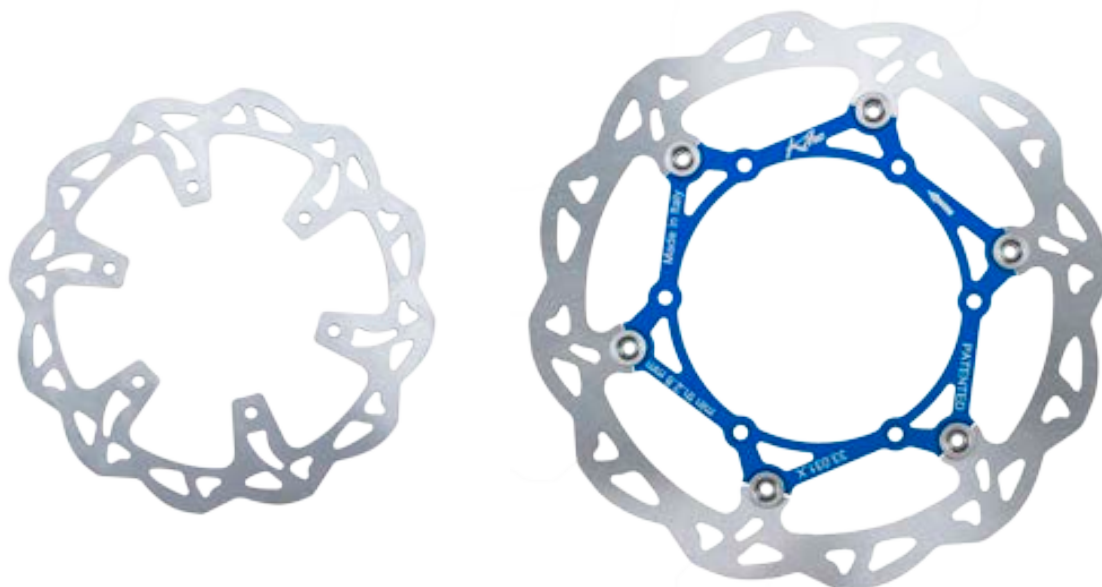




dischi freno MX-EN

MX-EN brake discs

SPORT



brand	model	cc	year	description	code	color	price	
BETA	RR	tutte/all (no 50/125 4t)	13 ...	anteriore/front floating ø260mm	33.230.1	BR/BL/RO	138,00	
HONDA	CR/CRF	125/250/450	95 ...	anteriore/front floating ø270mm	33.210.0	BR/RO	138,00	
				anteriore/front floating ø260mm	33.210.1		138,00	
				anteriore/front fix ø260mm	33.212.0	82,00	NEW!	
				anteriore/front fix ø240mm	33.214.0	82,00		
				posteriore/rear fix ø240mm	33.215.0	82,00		
YAMAHA	YZ/YZF/WR/WRF	125/250/450	02 ...	anteriore/front floating ø270mm	33.220.0	BR/BL	138,00	
	WRF	450	02 15	anteriore/front floating ø260mm	33.220.1	BR/BL	138,00	
				anteriore/front fix ø250mm	33.223.0	82,00		
	YZF	250/450	02 15	anteriore/front floating ø260mm	33.220.1	BR/BL	138,00	
				anteriore/front fix ø250mm	33.223.0	82,00		
				anteriore/front floating ø260mm	33.220.1	BR/BL	138,00	
YZ/WR/WRF	125/250	02 ...	anteriore/front fix ø250mm	33.223.0		82,00		
			YZ/YZF/WR/WRF	125/250/450	02 ...	posteriore/rear fix ø245mm	33.225.0	
KTM	SX/SXF/EXC/EXCF	tutte/all (no 85/65/50)	98 ...	anteriore/front floating ø270mm	33.230.0	BR/AR/BL	138,00	
				anteriore/front floating ø260mm	33.230.1		82,00	NEW!
				anteriore/front fix ø260mm	33.232.0	82,00		
				posteriore/rear fix ø220mm	33.235.0	82,00		
HUSQVARNA	TC/FC/TE/FE	tutte/all (no 85)	14 ...	anteriore/front floating ø270mm	33.230.0	BR/AR/BL	138,00	
				anteriore/front floating ø260mm	33.230.1		82,00	
				posteriore/rear fix ø220mm	33.235.0	82,00		
KAWASAKI	KX/KXF/KLX R	125/250/450	06 ...	anteriore/front floating ø270mm	33.240.0	BR/VE	138,00	
				anteriore/front floating ø260mm	33.240.1		82,00	
				anteriore/front fix ø250mm	33.243.0	82,00		
SUZUKI	RM	125/250	89 ...	anteriore/front floating ø270mm	33.220.0	BR/BL	138,00	
				anteriore/front floating ø260mm	33.220.1		82,00	
				anteriore/front fix ø250mm	33.223.0	82,00		
	RMZ	250	04 06	07 ...	posteriore/rear fix ø240mm	33.245.0	BR/RO	138,00
					anteriore/front floating ø270mm	33.250.0		138,00
					anteriore/front floating ø260mm	33.250.1	82,00	
					anteriore/front fix ø250mm	33.253.0	82,00	
					posteriore/rear fix ø240mm	33.255.0	82,00	
					450	05 ...	anteriore/front floating ø270mm	33.250.0
anteriore/front floating ø260mm	33.250.1	138,00						
anteriore/front fix ø250mm	33.253.0	82,00						
posteriore/rear fix ø240mm	33.255.0	82,00						



dischi freno pieni MX-EN **MX-EN full brake discs**



Il disco pieno permette una migliore modulabilità e un minor consumo delle pastiglie in caso di fango.

The full disk allows better modulation and a lower consumption of the pads in muddy tracks.

brand	model	cc	year	description	code	price
HONDA	CR/CRF	125/250/450	95 ...	posteriore/rear fix ø240mm	33.216.0	75,00
YAMAHA	YZ//YZFWR/WRF	125/250/450	02 ...	posteriore/rear fix ø245mm	33.226.0	75,00
KTM	SX/SXF/EXC/EXCF	Tutte/All (no 85/65/50)	98 ...	posteriore/rear fix ø220mm	33.236.0	75,00
HUSQVARNA	TC/FC/TE/FE	Tutte/All (no 85)	14 ...	posteriore/rear fix ø220mm	33.236.0	75,00
KAWASAKI	KX/KXF/KLX R	125/250/450	03 ...	posteriore/rear fix ø240mm	33.246.0	75,00
SUZUKI	RMZ	250	07 ...	posteriore/rear fix ø240mm	33.256.0	75,00
		450	05 ...			
		250	04 06	posteriore/rear fix ø240mm	33.246.0	75,00

(sconto/discount A)

2nd AMA 250 SX Championship
SHANE MCELRATH
KTM Troy Lee Design



disponibili anche con raggi neri
available also with black spokes



ruote MX-EN

MX-EN wheels

ELITE

Le ruote Elite sono adatte a chi pretende il meglio da un prodotto racing e sono la scelta vincente dei campioni del mondo.

Le ruote Elite sono assemblate con i raggi Alpina e i cerchi Takasago EXCEL Signature.

ELITE wheels are suitable for those who want the best racing product and they are the champions winning choice.

Elite wheels are assembled with Alpina spokes and Takasago EXCEL Signature rims.

brand	model	cc	year	description	code	color	price			
BETA	RR	Tutte/All (no 50/125 4T)	05	12	anteriore/front 1,60"x21"	30.107.0	RO	446,00		
					posteriore/rear 1,85"x19"	30.108.0	RO	527,00		
			13	...	posteriore/rear 2,15"x19"	30.109.0	RO	550,00		
					posteriore/rear 2,15"x18"	30.110.0	RO	541,00		
					anteriore/front 1,60"x21"	30.157.0	RO	446,00		
					posteriore/rear 1,85"x19"	30.158.0	RO	527,00		
					posteriore/rear 2,15"x19"	30.159.0	RO	550,00		
posteriore/rear 2,15"x18"	30.160.0	RO	541,00							
GAS GAS	EC*	125/250/300	06	...	anteriore/front 1,60"x21"	20.457.0	RO	446,00		
	ECF*	250/450	10	...	posteriore/rear 1,85"x19"	20.458.0	RO	527,00		
	tutti/all*	tutte/all	03	...	posteriore/rear 2,15"x19"	20.459.0	RO	550,00		
					posteriore/rear 2,15"x18"	20.460.0	RO	541,00		
HONDA	CR/CRF	125/250/450	00	...	anteriore/front 1,60"x21"	20.007.0	RO	446,00		
					posteriore/rear 1,85"x19"	20.008.0	RO	527,00		
		125/250	00	13	...	posteriore/rear 2,15"x19"	20.009.0	RO	550,00	
						posteriore/rear 2,15"x18"	20.010.0	RO	541,00	
		450	14	posteriore/rear 1,85"x19"	20.558.0	RO	527,00	
						posteriore/rear 2,15"x18"	20.560.0	RO	541,00	
			04	12	posteriore/rear 2,15"x19"	20.009.0	RO	550,00
							posteriore/rear 2,15"x18"	20.010.0	RO	541,00
		150	07	posteriore/rear 2,15"x19"	20.559.0	RO	550,00	
						posteriore/rear 2,15"x18"	20.560.0	RO	541,00	
KAWASAKI	KX/KXF	125/250/450	06	...	anteriore/front 1,60"x21"	20.107.0	RO/VE	446,00		
		125/250	03	...	posteriore/rear 1,85"x19"	20.108.0	RO/VE	527,00		
		250/450	03	...	posteriore/rear 2,15"x19"	20.109.0	RO/VE	550,00		
		125/250/450	03	...	posteriore/rear 2,15"x18"	20.110.0	RO/VE	541,00		
	KX	85	01	...	anteriore/front 1,60"x19"	20.807.0	RO/VE	389,00		
					posteriore/rear 1,85"x16"	20.809.0	RO/VE	441,00		

Per tutte le ruote, a richiesta e con maggiorazione di prezzo, possono essere forniti cerchi EXCEL A60 e DID Dirt Star LTX/STX, disponibilità a magazzino non garantita.
EXCEL A60 and DID Dirt Star LTX/STX rims can be supplied for every wheel on request and extra cost, stock availability not guaranteed.

* Tutti tranne EC/ECF standard 2010 e Replica 2011
All except EC/ECF standard 2010 and Replica 2011

brand	model	cc	year	description	code	color	price		
HUSQVARNA	TC/TE	250/450/510	00 10	anteriore/front	1,60"x21"	20.157.0	RO	446,00	
		250	00 10	posteriore/rear	1,85"x19"	20.158.0	RO	527,00	
		450/510	00 10	posteriore/rear	2,15"x19"	20.159.0	RO	550,00	
		250/450/510	00 10	posteriore/rear	2,15"x18"	20.160.0	RO	541,00	
	CR/WR/TC/TE/TXC	125/250/310/449/510	11 13	anteriore/front	1,60"x21"	20.257.0	RO	446,00	
					1,85"x19"	20.258.0	RO	527,00	
		125/250/310	11 13	posteriore/rear	2,15"x19"	20.259.0	RO	550,00	
					2,15"x18"	20.260.0	RO	541,00	
	TE/FE	tutte/all	14 15	anteriore/front	1,60"x21"	20.207.0	AR/BL	446,00	
			16 ...	anteriore/front	1,60"x21"	20.247.0	AR/BL	446,00 NEW!	
			14 ...	posteriore/rear	2,15"x18"	20.210.0	AR/BL	541,00	
			14 14	anteriore/front	1,60"x21"	20.207.0	AR/BL	446,00	
	TC/FC	tutte/all (no 85)	15 ...	anteriore/front	1,60"x21"	20.247.0	AR/BL	446,00	
			14 15	posteriore/rear	1,85"x19"	20.208.0	AR/BL	527,00	
						2,15"x19"	20.209.0	AR/BL	550,00
			16 ...	posteriore/rear	1,85"x19"	20.228.0	AR/BL	527,00 NEW!	
				2,15"x19"	20.229.0	AR/BL	550,00 NEW!		
	TC	85	14 ...	anteriore/front	1,60"x19"	20.712.0	AR/BL	389,00	
				posteriore/rear	1,85"x16"	20.709.0	AR/BL	441,00	
				anteriore/front	1,40"x17"	20.719.0	AR/BL	376,00	
			posteriore/rear	1,60"x14"	20.720.0	AR/BL	432,00		
KTM	EXC/EXCF	tutte/all	16 ...	anteriore/front	1,60"x21"	20.247.0	AR/BL	446,00 NEW!	
			03 15	anteriore/front	1,60"x21"	20.207.0	AR/BL	446,00	
			90 ...	posteriore/rear	2,15"x18"	20.210.0	AR/BL	541,00	
			15 ...	anteriore/front	1,60"x21"	20.247.0	AR/BL	446,00	
	SX/SXF	tutte/all (no 85/65)	03 14	anteriore/front	1,60"x21"	20.207.0	AR/BL	446,00	
			13 ...	posteriore/rear	1,85"x19"	20.228.0	AR/BL	527,00	
						2,15"x19"	20.229.0	AR/BL	550,00
			90 12	posteriore/rear	1,85"x19"	20.208.0	AR/BL	527,00	
				2,15"x19"	20.209.0	AR/BL	550,00		
	SX	65	08 ...	anteriore/front	1,60"x14"	20.657.0	AR/BL	348,00	
				posteriore/rear	1,60"x12"	20.659.0	AR/BL	386,00	
				anteriore/front	1,60"x19"	20.712.0	AR/BL	389,00	
12 ...			posteriore/rear	1,85"x16"	20.709.0	AR/BL	441,00		
	85		anteriore/front	1,40"x17"	20.719.0	AR/BL	376,00		
			posteriore/rear	1,60"x14"	20.720.0	AR/BL	432,00		
		06 11	anteriore/front	1,60"x19"	20.707.0	AR/BL	389,00		
			posteriore/rear	1,85"x16"	20.709.0	AR/BL	441,00		
SUZUKI	RMZ	250	07 ...	anteriore/front	1,60"x21"	20.307.0	BL/RO	446,00	
				posteriore/rear	1,85"x19"	20.308.0	BL/RO	527,00	
					2,15"x18"	20.310.0	BL/RO	541,00	
			04 06	posteriore/rear	1,85"x19"	20.108.0	BL/RO	527,00	
				2,15"x18"	20.110.0	BL/RO	541,00		
	RM	85	05 ...	anteriore/front	1,60"x21"	20.307.0	BL/RO	446,00	
				posteriore/rear	2,15"x19"	20.309.0	BL/RO	550,00	
					2,15"x18"	20.310.0	BL/RO	541,00	
00 ...			anteriore/front	1,60"x19"	20.757.0	BL/RO	389,00		
			posteriore/rear	1,85"x16"	20.759.0	BL/RO	441,00		
YAMAHA	YZF	250/450	14 ...	anteriore/front	1,60"x21"	20.537.0	BL/RO	446,00	
			02 13	anteriore/front	1,60"x21"	20.507.0	BL/RO	446,00	
			09 ...	posteriore/rear	2,15"x19"	20.509.0	BL/RO	550,00	
					2,15"x18"	20.510.0	BL/RO	541,00	
			02 08	posteriore/rear	2,15"x19"	20.059.0	BL/RO	550,00	
					2,15"x18"	20.060.0	BL/RO	541,00	
	YZ/WR/WRF	125/250/450	09 ...	posteriore/rear	1,85"x19"	20.508.0	BL/RO	527,00	
			02 08	posteriore/rear	1,85"x19"	20.058.0	BL/RO	527,00	
				anteriore/front	1,60"x21"	20.507.0	BL/RO	446,00	
			02 ...	posteriore/rear	1,85"x19"	20.058.0	BL/RO	527,00	
					2,15"x19"	20.059.0	BL/RO	550,00	
					2,15"x18"	20.060.0	BL/RO	541,00	
YZ	85	00 ...	anteriore/front	1,60"x19"	20.757.0	BL/RO	389,00		
			posteriore/rear	1,85"x16"	20.759.0	BL/RO	441,00		
			anteriore/front	1,60"x21"	20.537.0	BL/RO	446,00		
		15 ...	posteriore/rear	1,85"x19"	20.058.0	BL/RO	527,00		
			2,15"x19"	20.059.0	BL/RO	550,00			
			2,15"x18"	20.060.0	BL/RO	541,00			

disponibili anche con raggi neri
available also with black spokes



ruote MX-EN

MX-EN wheels

SPORT

Le ruote SPORT sono adatti a chi fa dell'offroad uno stile di vita.
Le ruote SPORT sono assemblate con raggi Alpina e cerchi Rexfelgen by EXCEL.
SPORT wheels are suitable for those who live an offroad lifestyle.
SPORT wheels are assembled with Alpina spokes and Rexfelgen rims by EXCEL.

brand	model	cc	year	description	code	color	price			
HONDA	CR/CRF	125/250/450	00 ...	anteriore/front	1,60"x21"	20.007.E	RO	367,00		
			00 13	posteriore/rear	1,85"x19"	20.008.E	RO	434,00		
		125/250	00 13	posteriore/rear	2,15"x19"	20.009.E	RO	452,00		
			14 ...	posteriore/rear	2,15"x18"	20.010.E	RO	445,00		
		450	14 ...	posteriore/rear	1,85"x19"	20.558.E	RO	434,00		
			04 12	posteriore/rear	2,15"x18"	20.560.E	RO	445,00		
			13 ...	04 12	posteriore/rear	2,15"x19"	20.009.E	RO	452,00	
				13 ...	04 12	posteriore/rear	2,15"x18"	20.010.E	RO	445,00
					13 ...	04 12	posteriore/rear	2,15"x19"	20.559.E	RO
				13 ...		posteriore/rear	2,15"x18"	20.560.E	RO	445,00
KAWASAKI	KX/KXF	125/250/450	06 ...	anteriore/front	1,60"x21"	20.107.E	RO/VE	367,00		
		125/250	03 ...	posteriore/rear	1,85"x19"	20.108.E	RO/VE	434,00		
		250/450	03 ...	posteriore/rear	2,15"x19"	20.109.E	RO/VE	452,00		
		125/250/450	03 ...	posteriore/rear	2,15"x18"	20.110.E	RO/VE	445,00		
HUSQVARNA	TE/FE	tutte/all	14 15	anteriore/front	1,60"x21"	20.207.E	AR/BL	367,00		
			16 ...	anteriore/front	1,60"x21"	20.247.E	AR/BL	367,00		
			14 ...	posteriore/rear	2,15"x18"	20.210.E	AR/BL	445,00		
			14 14	anteriore/front	1,60"x21"	20.207.E	AR/BL	367,00		
	TC/FC	tutte/all (no 85)	15 ...	anteriore/front	1,60"x21"	20.247.E	AR/BL	367,00		
			14 15	posteriore/rear	1,85"x19"	20.208.E	AR/BL	434,00		
				posteriore/rear	2,15"x19"	20.209.E	AR/BL	452,00		
			16 ...	posteriore/rear	1,85"x19"	20.228.E	AR/BL	434,00		
posteriore/rear	2,15"x19"	20.229.E		AR/BL	452,00					

NEW!

NEW!

NEW!

brand	model	cc	year		description	code	color	price	
KTM	EXC/EXCF	tutte/all	16 ...	anteriore/front	1,60"x21"	20.247.E	AR/BL	367,00 NEW!	
			03 15	ante riore/front	1,60"x21"	20.207.E	AR/BL	367,00	
			90 ...	posteriore/rear	2,15"x18"	20.210.E	AR/BL	445,00	
	SX/SXF	tutte/all (no 85/65)	15 ...	anteriore/front	1,60"x21"	20.247.E	AR/BL	367,00	
			03 14	anteriore/front	1,60"x21"	20.207.E	AR/BL	367,00	
			13 ...	posteriore/rear	1,85"x19"	20.228.E	AR/BL	434,00	
					2,15"x19"	20.229.E	AR/BL	452,00	
			90 12	posteriore/rear	1,85"x19"	20.208.E	AR/BL	434,00	
					2,15"x19"	20.209.E	AR/BL	452,00	
SUZUKI	RMZ	250	07 ...	anteriore/front	1,60"x21"	20.307.E	BL/RO	367,00	
			04 06	posteriore/rear	1,85"x19"	20.308.E	BL/RO	434,00	
					2,15"x18"	20.310.E	BL/RO	445,00	
		450	05 ...	anteriore/front	1,60"x21"	20.307.E	BL/RO	367,00	
				posteriore/rear	2,15"x19"	20.309.E	BL/RO	452,00	
					2,15"x18"	20.310.E	BL/RO	445,00	
	YAMAHA	YZF	250/450	14 ...	anteriore/front	1,60"x21"	20.537.E	BL/RO	367,00
				02 13	anteriore/front	1,60"x21"	20.507.E	BL/RO	367,00
				09 ...	posteriore/rear	2,15"x19"	20.509.E	BL/RO	452,00
2,15"x18"			20.510.E			BL/RO	445,00		
250			02 08	posteriore/rear	2,15"x19"	20.059.E	BL/RO	452,00	
				2,15"x18"	20.060.E	BL/RO	445,00		
		09 ...		posteriore/rear	1,85"x19"	20.508.E	BL/RO	434,00	
YZ/WR/WRF		125/250/450	02 ...	posteriore/rear	2,15"x19"	20.058.E	BL/RO	434,00	
					2,15"x18"	20.059.E	BL/RO	452,00	
					2,15"x18"	20.060.E	BL/RO	445,00	
			15 ...	posteriore/rear	anteriore/front	1,60"x21"	20.537.E	BL/RO	367,00
					1,85"x19"	20.058.E	BL/RO	434,00	
	2,15"x19"				20.059.E	BL/RO	452,00		
				2,15"x18"	20.060.E	BL/RO	445,00		

(sconto/discount B)





ruote SM SM wheels ELITE

tube type **TUBELESS STS**
alpina

brand	model	cc	year	description	code	color	price	price	
BETA	RR	tutte/all (no 50/125 4t)	05 12	ant / front 3.50"x16.5"	30.111.0	RO	470,00	580,00	
				ant / front 3.50"x17"	30.112.0	RO	446,00	580,00	
				post / rear 4.25"x17"	30.113.0	RO	536,00	-	
				post / rear 4.50"x17"	30.114.0	RO	556,00	-	
				post / rear 5.00"x17"	30.115.0	RO	608,00	754,00	
			13 ...	ant / front 3.50"x16.5"	30.161.0	RO	470,00	580,00	
				ant / front 3.50"x17"	30.162.0	RO	446,00	580,00	
				post / rear 4.25"x17"	30.163.0	RO	536,00	-	
				post / rear 4.50"x17"	30.164.0	RO	556,00	-	
				post / rear 5.00"x17"	30.165.0	RO	608,00	754,00	
HONDA	CR/CRF	125/250/450	00 ...	ant / front 3.50"x16.5"	20.011.0	RO	470,00	580,00	
				ant / front 3.50"x17"	20.012.0	RO	446,00	580,00	
		125/250	00 07	post / rear 4.25"x17" - 36 holes	20.013.0	RO	536,00	-	
				250	04 13	post / rear 4.25"x17" - 36 holes	20.013.0	RO	536,00
		450	02 12	post / rear 4.25"x17" - 36 holes	20.013.0	RO	536,00	-	
				125/250	00 07	post / rear 4.50"x17" - 36 holes	20.014.0	RO	556,00
		250	04 13	post / rear 4.50"x17" - 36 holes	20.014.0	RO	556,00	-	
				450	02 12	post / rear 4.50"x17" - 36 holes	20.014.0	RO	556,00
		125/250	00 07	post / rear 5.00"x17" - 36 holes	20.015.0	RO	608,00	754,00	
				250	04 13	post / rear 5.00"x17" - 36 holes	20.015.0	RO	608,00
		450	02 12	post / rear 5.00"x17" - 36 holes	20.015.0	RO	608,00	754,00	
				125/250	00 07	post / rear 5.50"x17" - 36 holes	20.016.0	RO	645,00
		250	04 13	post / rear 5.50"x17" - 36 holes	20.016.0	RO	645,00	792,00	
				450	02 12	post / rear 5.50"x17" - 36 holes	20.016.0	RO	645,00
		250	14 ...	post / rear 4.25"x17" - 36 holes	20.563.0	RO	536,00	-	
				450	13 ...	post / rear 4.25"x17" - 36 holes	20.563.0	RO	536,00
		250	14 ...	post / rear 4.50"x17" - 36 holes	20.564.0	RO	556,00	-	
				450	13 ...	post / rear 4.50"x17" - 36 holes	20.564.0	RO	556,00
		250	14 ...	post / rear 5.00"x17" - 36 holes	20.565.0	RO	608,00	754,00	
				450	13 ...	post / rear 5.00"x17" - 36 holes	20.565.0	RO	608,00
250	14 ...	post / rear 5.50"x17" - 36 holes	20.566.0	RO	645,00	792,00			
		450	13 ...	post / rear 5.50"x17" - 36 holes	20.566.0	RO	645,00	792,00	
HUSQVARNA	SM	450/510/610	00 10	ant / front 3.50"x16.5"	20.161.0	RO	470,00	580,00	
				ant / front 3.50"x17"	20.162.0	RO	446,00	580,00	
				post / rear 4.25"x17"	20.163.0	RO	536,00	-	
				post / rear 4.50"x17"	20.164.0	RO	556,00	-	
				post / rear 5.00"x17"	20.165.0	RO	608,00	754,00	
	TE/FE	tutte/all	14 15	14 15	ant / front 3.50"x16.5"	20.211.0	BL	470,00	580,00
					TE/FE	tutte/all	16 ...	ant / front 3.50"x16.5"	20.231.0
	FS	450	15 ...	14 14	ant / front 3.50"x16.5"	20.211.0	BL	470,00	580,00
					TC/FC	tutte/all (no 85)	15 ...	ant / front 3.50"x16.5"	20.231.0
	TE/FE	tutte/all	14 ...	14 ...	ant / front 3.50"x17"	20.212.0	BL	446,00	580,00
					FS	450	15 ...	ant / front 3.50"x17"	20.212.0
	TC/FC	tutte/all (no 85)	14 14	14 14	ant / front 3.50"x17"	20.212.0	BL	446,00	580,00
					TC/FC/FS	tutte/all (no 85)	15 ...	ant / front 3.50"x17"	20.232.0
	TE/FE	tutte/all	14 ...	14 ...	post / rear 4.25"x17"	20.213.0	BL	536,00	-
					post / rear 4.50"x17"	20.214.0	BL	556,00	-
	TE/FE	tutte/all	14 ...	14 ...	post / rear 5.00"x17"	20.215.0	BL	608,00	754,00
					post / rear 5.50"x17"	20.216.0	BL	645,00	792,00
	TC/FC	tutte/all (no 85)	14 15	14 15	post / rear 4.25"x17"	20.213.0	BL	536,00	-
					post / rear 4.50"x17"	20.214.0	BL	556,00	-
	TC/FC	tutte/all (no 85)	16 ...	16 ...	post / rear 5.00"x17"	20.215.0	BL	608,00	754,00
					post / rear 5.50"x17"	20.216.0	BL	645,00	792,00
	TC/FC	tutte/all (no 85)	16 ...	16 ...	post / rear 4.25"x17"	20.233.0	BL	536,00	-
					post / rear 4.50"x17"	20.234.0	BL	556,00	-
	TC/FC	tutte/all (no 85)	16 ...	16 ...	post / rear 5.00"x17"	20.235.0	BL	608,00	754,00
					post / rear 5.50"x17"	20.236.0	BL	645,00	792,00

Codice versione Tubeless: sostituire l'ultimo "0" con la lettera "T". Esempio: tube type 30.111.0 → tubeless type 30.111.T

Tubeless version code: replace the last "0" with letter "T". Example: tube type 30.111.0 → tubeless type 30.111.T

brand	model	cc	year		description	code	color	price	price
HUSQVARNA	FS	450	15	...	post / rear 4.25"x17"	20.233.0	AR/BL	536,00	-
				...	post / rear 4.50"x17"	20.234.0	AR/BL	556,00	-
				...	post / rear 5.00"x17"	20.235.0	AR/BL	608,00	754,00
				...	post / rear 5.50"x17"	20.236.0	AR/BL	645,00	792,00
KAWASAKI	KX/KXF	125/250/450	06	...	ant / front 3.50"x16.5"	20.111.0	BL/RO/VE	470,00	580,00
				...	ant / front 3.50"x17"	20.112.0	BL/RO/VE	446,00	580,00
			03	...	post / rear 4.25"x17"	20.113.0	BL/RO/VE	536,00	-
				...	post / rear 4.50"x17"	20.114.0	BL/RO/VE	556,00	-
				...	post / rear 5.00"x17"	20.115.0	BL/RO/VE	608,00	754,00
...	post / rear 5.50"x17"	20.116.0	BL/RO/VE	645,00	792,00				
KTM	EXC/EXCF	tutte/all	03	15	ant / front 3.50"x16.5"	20.211.0	AR/BL	470,00	580,00
	EXC/EXCF	tutte/all	03	15	ant / front 3.50"x17"	20.212.0	AR/BL	446,00	580,00
	EXC/EXCF	tutte/all	16	...	ant / front 3.50"x16.5"	20.231.0	AR/BL	470,00	580,00 NEW!
	EXC/EXCF	tutte/all	16	...	ant / front 3.50"x17"	20.232.0	AR/BL	446,00	580,00 NEW!
	SX/SXF/SMR	tutte/all (no 85)	03	14	ant / front 3.50"x16.5"	20.211.0	AR/BL	470,00	580,00
	SX/SXF	tutte/all (no 85)	15	...	ant / front 3.50"x16.5"	20.231.0	AR/BL	470,00	580,00
	SX/SXF/SMR	tutte/all (no 85)	03	14	ant / front 3.50"x17"	20.212.0	AR/BL	446,00	580,00
	SX/SXF	tutte/all (no 85)	15	...	ant / front 3.50"x17"	20.232.0	AR/BL	446,00	580,00
	EXC/EXCF	tutte/all	90	...	post / rear 4.25"x17"	20.213.0	AR/BL	536,00	-
	SX/SXF/SMR	tutte/all (no 85)	90	12	post / rear 4.25"x17"	20.213.0	AR/BL	536,00	-
	EXC/EXCF	tutte/all	90	...	post / rear 4.50"x17"	20.214.0	AR/BL	556,00	-
	SX/SXF/SMR	tutte/all (no 85)	90	12	post / rear 4.50"x17"	20.214.0	AR/BL	556,00	-
	EXC/EXCF	tutte/all	90	...	post / rear 5.00"x17"	20.215.0	AR/BL	608,00	754,00
	SX/SXF/SMR	tutte/all (no 85)	90	12	post / rear 5.00"x17"	20.215.0	AR/BL	608,00	754,00
	EXC/EXCF	tutte/all	90	...	post / rear 5.50"x17"	20.216.0	AR/BL	645,00	792,00
	SUZUKI	RMZ	250	04	06	post / rear 4.25"x17"	20.113.0	BL/RO	536,00
06					post / rear 4.50"x17"	20.114.0	BL/RO	556,00	-
07				...	post / rear 5.00"x17"	20.115.0	BL/RO	608,00	754,00
				...	ant / front 3.50"x16.5"	20.311.0	BL/RO	470,00	580,00
				...	ant / front 3.50"x17"	20.312.0	BL/RO	446,00	580,00
				...	ant / front 3.50"x17"	20.312.0	BL/RO	446,00	580,00
				...	post / rear 4.25"x17"	20.313.0	BL/RO	536,00	-
				...	post / rear 4.25"x17"	20.313.0	BL/RO	536,00	-
				...	post / rear 4.50"x17"	20.314.0	BL/RO	556,00	-
				...	post / rear 4.50"x17"	20.314.0	BL/RO	556,00	-
...	post / rear 5.00"x17"	20.315.0	BL/RO	608,00	754,00				
...	post / rear 5.00"x17"	20.315.0	BL/RO	608,00	754,00				
YAMAHA	YZ/WR	125/250	02	...	ant / front 3.50"x16.5"	20.511.0	BL/RO	470,00	580,00
	WRF	250/450	02	...	ant / front 3.50"x16.5"	20.511.0	BL/RO	470,00	580,00
	YZF	250/450	02	13	ant / front 3.50"x16.5"	20.511.0	BL/RO	470,00	580,00
			14	...	ant / front 3.50"x16.5"	20.541.0	BL/RO	470,00	580,00
	YZ/WR	125/250	02	...	ant / front 3.50"x17"	20.512.0	BL/RO	446,00	580,00
	WRF	250/450	02	...	ant / front 3.50"x17"	20.512.0	BL/RO	446,00	580,00
	YZF	250/450	02	13	ant / front 3.50"x17"	20.512.0	BL/RO	446,00	580,00
			14	...	ant / front 3.50"x17"	20.542.0	BL/RO	446,00	580,00
	YZ/WR	125/250	00	...	post / rear 4.25"x17"	20.063.0	BL/RO	536,00	-
	WRF	250/450	02	...	post / rear 4.25"x17"	20.063.0	BL/RO	536,00	-
	YZF	250/450	02	08	post / rear 4.25"x17"	20.063.0	BL/RO	536,00	-
	YZ/WR	125/250	00	...	post / rear 4.50"x17"	20.064.0	BL/RO	556,00	-
	WRF	250/450	02	...	post / rear 4.50"x17"	20.064.0	BL/RO	556,00	-
	YZF	250/450	02	08	post / rear 4.50"x17"	20.064.0	BL/RO	556,00	-
YZ/WR	125/250	00	...	post / rear 5.00"x17"	20.065.0	BL/RO	608,00	754,00	
WRF	250/450	02	...	post / rear 5.00"x17"	20.065.0	BL/RO	608,00	754,00	
YZF	250/450	09	...	post / rear 5.00"x17"	20.065.0	BL/RO	608,00	754,00	
			...	post / rear 4.25"x17"	20.513.0	BL/RO	536,00	-	
			...	post / rear 4.50"x17"	20.514.0	BL/RO	556,00	-	
					20.515.0	BL/RO	608,00	754,00	



mozzi hubs ELITE



I mozzi ELITE sono adatti a chi pretende il meglio da un prodotto racing e sono la scelta vincente dei campioni del mondo. ELITE hubs are suitable for those who want the best racing product and they are the champions winning choice.

Per il montaggio sono necessari i kit di raggi Kite (pag. 22)
Kite spokes kit is required for mounting (page 22).

* Tutti tranne EC/ECF standard 2010 e Replica 2011
All except EC/ECF standard 2010 and Replica 2011

brand	model	cc	year	description	code	color	price
BETA	RR (no 50/125 4T)	tutte/all	05 12	anteriore/front	30.105.0	RO	203,00
				posteriore/rear	30.106.0	RO	283,00
			13 ...	anteriore/front	30.155.0	RO	203,00
				posteriore/rear	30.156.0	RO	283,00
GAS GAS	EC*	125/250/300	06 ...	anteriore/front	20.455.0	RO	203,00
	ECF*	250/450	10 ...	anteriore/front	20.455.0	RO	203,00
	tutti/all*	tutte/all	03 ...	posteriore/rear	20.456.0	RO	283,00
HONDA	CR/CRF	125/250/450	00 ...	anteriore/front	20.005.0	RO	203,00
		125/250	00 13	posteriore 32 fori	20.006.0	RO	283,00
				posteriore 36 fori	20.006.1	RO	283,00
		250	14 ...	rear 36 holes	20.556.1	RO	283,00
		450	02 12	rear 32 holes	20.006.0	RO	283,00
				rear 36 holes	20.006.1	RO	283,00
			13 ...	posteriore 36 fori	20.556.1	RO	283,00
		150		anteriore/front 28 fori/holes	20.405.0	RO	170,00
				anteriore/front 32 fori/holes	20.405.1	RO	170,00
				posteriore/rear	20.406.0		235,00
HUSQVARNA	SM	450/510/610	00 10	anteriore/front	20.155.2	RO	203,00
	TC/TE	250/450/510	00 10	anteriore/front	20.155.3	RO	203,00
	SM/TC/TE	tutte/all	00 10	posteriore/rear	20.156.1	RO	283,00
	CR/WR	125	11 13	anteriore/front	20.255.0	RO	203,00
				posteriore/rear	20.256.0	RO	283,00
	TC/TE/TXC	tutte/all	11 13	anteriore/front	20.255.0	RO	203,00
				posteriore/rear	20.256.0	RO	283,00
	TE/FE	tutte/all	16 ...	anteriore/front	20.245.0	AR/BL	203,00
			14 15	anteriore/front	20.205.0	AR/BL	203,00
			14 ...	posteriore/rear	20.206.0	AR/BL	283,00
			15 ...	anteriore/front	20.245.0	AR/BL	203,00
			14 14	anteriore/front	20.205.0	AR/BL	203,00
			14 15	posteriore/rear	20.206.0	AR/BL	283,00
	TC/FC	tutte/all (no 85)	16 ...	posteriore/rear	20.376.0	AR/BL	283,00
			14 ...	anteriore/front	20.711.0	AR/BL	170,00
14 ...			posteriore/rear	20.706.0	AR/BL	235,00	
TC	85	14 ...	anteriore/front	20.105.0	RO/VE	203,00	
		03 ...	posteriore/rear	20.106.0	RO/VE	283,00	
KAWASAKI	KX/KXF	125/250/450	06 ...	anteriore/front	20.105.0	RO/VE	203,00
			03 ...	posteriore/rear	20.106.0	RO/VE	283,00
	KX	85	01 ...	anteriore/front	20.805.0	RO/VE	170,00
				posteriore/rear	20.806.0	RO/VE	235,00

brand	model	cc	year	description	code	color	price	
KTM	EXC/EXCF	tutte/all	16 ...	anteriore/front	20.245.0	AR/BL	203,00 NEW!	
			03 15	anteriore/front	20.205.0	AR/BL	203,00	
			90 ...	posteriore/rear	20.206.0	AR/BL	283,00	
	SX/SXF	tutte/all (no 85)	03 14	anteriore/front	20.205.0	AR/BL	203,00	
			15 ...	anteriore/front	20.245.0	AR/BL	203,00	
			90 12	posteriore/rear	20.206.0	AR/BL	283,00	
	SX/SXF	tutte/all (no 85)	13 ...	posteriore/rear	20.376.0	AR/BL	283,00	
			65	08 ...	anteriore/front	20.655.0	AR	143,00
				...	posteriore/rear	20.656.0	AR	194,00
	SX	85	06 11	anteriore/front	20.705.0	AR/BL	170,00	
			06 ...	posteriore/rear	20.706.0	AR/BL	235,00	
			12 ...	anteriore/front	20.711.0	AR/BL	170,00	
SUZUKI	RMZ	250	07 ...	anteriore/front	20.305.0	BL/RO	203,00	
			...	posteriore/rear	20.306.0	BL/RO	283,00	
			04 06	posteriore/rear	20.106.0	BL/RO/VE	283,00	
	450	05 ...	anteriore/front	20.305.0	BL/RO	203,00		
		...	posteriore/rear	20.306.0	BL/RO	283,00		
	RM	85	00 ...	anteriore/front	20.755.0	BL/RO	170,00	
YAMAHA	YZ/WR/WRF	125/250/450	02 ...	anteriore/front	20.505.1	BL/RO	203,00	
			00 ...	posteriore/rear	20.056.0	BL/RO	283,00	
	YZF	250/450	02 13	anteriore/front	20.505.1	BL/RO	203,00	
			14 ...	anteriore/front	20.535.1	BL/RO	203,00	
			00 08	posteriore/rear	20.056.0	BL/RO	283,00	
	YZFX	250	09 ...	posteriore/rear	20.506.0	BL/RO	283,00	
			15 ...	anteriore/front	20.535.1	BL/RO	203,00	
	YZ	85	...	posteriore/rear	20.056.0	BL/RO	283,00	
			00 ...	anteriore/front	20.755.0	BL/RO	170,00	
	...	posteriore/rear	20.756.0	BL/RO	235,00			

(sconto/discount B)

2nd MX2 World Championship
PAULS JONASS
Red Bull KTM Factory Racing





mozzi
hubs

SPORT

I mozzi SPORT sono adatti a chi fa dell'offroad uno stile di vita.

SPORT hubs are suitable for those who live an offroad lifestyle.

Per il montaggio sono necessari i kit di raggi Kite (pag. 22)

Kite spokes kit is required for mounting (page 22).



brand	model	cc	year	description	code	color	price		
HONDA	CR/CRF	125/250/450	00 ...	anteriore/front	40.005.0	RO	184,00		
			00 13	posteriore/rear - 32 fori/holes	40.006.0	RO	256,00		
		250	14 ...	posteriore/rear - 36 fori/holes	40.556.1	RO	256,00		
			02 12	posteriore/rear - 32 fori/holes	40.006.0	RO	256,00		
			13 ...	posteriore/rear - 36 fori/holes	40.006.1	RO	256,00		
				posteriore/rear - 36 fori/holes	40.556.1	RO	256,00		
HUSQVARNA	TE/FE	tutte/all	16 ...	anteriore/front	40.245.0	AR/BL	184,00 NEW!		
			14 15	anteriore/front	40.205.0	AR/BL	184,00		
			14 ...	posteriore/rear	40.206.0	AR/BL	256,00		
	TC/FC	tutte/all (no 85)	15 ...	anteriore/front	40.245.0	AR/BL	184,00		
			14 14	anteriore/front	40.205.0	AR/BL	184,00		
			14 15	posteriore/rear	40.206.0	AR/BL	256,00		
KAWASAKI	KX/KXF	125/250/450	16 ...	anteriore/front	40.376.0	AR/BL	256,00 NEW!		
			06 ...	anteriore/front	40.105.0	RO/VE	184,00		
			03 ...	posteriore/rear	40.106.0	RO/VE	256,00		
KTM	EXC/EXCF	tutte/all	16 ...	anteriore/front	40.245.0	AR/BL	184,00 NEW!		
			03 15	anteriore/front	40.205.0	AR/BL	184,00		
			90 ...	posteriore/rear	40.206.0	AR/BL	256,00		
	SX/SXF	tutte/all (no 85)	03 14	anteriore/front	40.205.0	AR/BL	184,00		
			15 ...	anteriore/front	40.245.0	AR/BL	184,00		
			90 12	posteriore/rear	40.206.0	AR/BL	256,00		
SUZUKI	RMZ	250	13 ...	posteriore/rear	40.376.0	AR/BL	256,00		
			07 ...	anteriore/front	40.305.0	BL/RO	184,00		
		04 06	posteriore/rear	40.106.0	BL/RO/VE	256,00			
YAMAHA	YZ/WR/WRF	125/250/450	05 ...	anteriore/front	40.305.0	BL/RO	184,00		
			02 ...	anteriore/front	40.505.1	BL/RO	184,00		
			00 ...	posteriore/rear	40.056.0	BL/RO	256,00		
	YZF	250/450	02 13	anteriore/front	40.505.1	BL/RO	184,00		
			14 ...	anteriore/front	40.535.1	BL/RO	184,00		
			00 08	posteriore/rear	40.056.0	BL/RO	256,00		
			09 ...	posteriore/rear	40.506.0	BL/RO	256,00		
			YZFX	250	15 ...	anteriore/front	40.535.1	BL/RO	184,00
					posteriore/rear	40.056.0	BL/RO	256,00	



flangia mozzo posteriore Honda **Honda rear hub adapter**

La flangia serve per trasformare i mozzi/ruote Honda vecchi in mozzi/ruota attuali.

The adapter transforms the old Honda hubs in current version.

<u>code</u>	<u>price</u>	<u>discount</u>
20.028.0	27,00	B





distanziali esterni external spacers



brand	model	cc	year	description	code	color	price	
HONDA	CR/CRF	125/250/450	00 ...	anteriore/front	20.022.0	RO/BL	19,00	
				posteriore/rear	20.021.0	RO/BL	19,00	
YAMAHA	YZF	250/450	14 ...	anteriore/front	20.070.0	RO/BL	19,00	
				07 13	anteriore/front	20.520.0	RO/BL	19,00
				09 ...	posteriore/rear	20.519.0	RO/BL	19,00
	YZ	125/250	02 08	posteriore/rear	20.073.0	RO/BL	19,00	
				08 13	anteriore/front	20.520.0	RO/BL	19,00
				00 08	posteriore/rear	20.073.0	RO/BL	19,00
KAWASAKI	KX/KXF	125/250/450	06 ...	anteriore/front	20.120.0	RO/VE	19,00	
				03 ...	posteriore/rear	20.119.0	RO/VE	19,00
KTM	EXC/EXCF	tutte/all	16 ...	anteriore/front	20.237.0	AR/BL/SI	19,00 NEW!	
				03 15	anteriore/front	20.219.0	AR/BL/SI	19,00
				90 ...	posteriore/rear	20.225.0	AR/BL/SI	19,00
	SX/SXF	tutte/all (no 85)	03 14	anteriore/front	20.219.0	AR/BL/SI	19,00	
				15 ...	anteriore/front	20.237.0	AR/BL/SI	19,00
				90 12	posteriore/rear	20.225.0	AR/BL/SI	19,00
HUSQVARNA	TE/FE	tutte/all	13 ...	posteriore/rear	20.227.0	AR/BL/SI	19,00	
				16 ...	anteriore/front	20.237.0	AR/BL/SI	19,00 NEW!
				14 15	anteriore/front	20.219.0	AR/BL/SI	19,00
	TC/FC	tutte/all (no 85)	14 ...	posteriore/rear	20.225.0	AR/BL/SI	19,00	
				15 ...	anteriore/front	20.237.0	AR/BL/SI	19,00
				14 14	anteriore/front	20.219.0	AR/BL/SI	19,00
SUZUKI	RMZ	250	07 ...	anteriore/front	20.320.0	BL/RO	19,00	
				posteriore/rear	20.319.0	BL/RO	19,00	
		450	05 ...	anteriore/front	20.320.0	BL/RO	19,00	
				posteriore/rear	20.319.0	BL/RO	19,00	



tappo fermacopertone rim lock nut

code	color	price	discount
20.950.0 (2 pcs)	AR/BL/NO/RO/VE	19,00	A

Il tappo fermacopertone Kite, oltre a donare un look racing alla tua moto, protegge la vite dal fango e dall'acqua evitando danni e grippaggi in fase di smontaggio, inoltre la rondella è conformata in modo tale da non rovinare il cerchio quando si va a serrare il fermacopertone.

The rim lock nut protects the rim lock from mud and water avoiding undesired grip on the screw. The special shape of the washer protects the rims from damage while you are mounting it.





cerchi rims

ELITE



type	description	holes	code	price	color	discount
MX/EN	ant / front 1.60"x21"	36	22.000.0	153,00	NO	B
MX	post / rear 1.85"x19"	36	22.001.0	160,00	NO	B
MX	post / rear 2.15"x19"	36	22.002.0	180,00	NO	B
EN	post / rear 2.15"x18"	36	22.003.0	172,00	NO	B
MX/EN	ant / front 1.60"x21"	36	22.000.0	128,00	SI	B
MX	post / rear 1.85"x19"	36	22.001.0	135,00	SI	B
MX	post / rear 2.15"x19"	36	22.002.0	155,00	SI	B
EN	post / rear 2.15"x18"	36	22.003.0	147,00	SI	B
SM	ant / front 3.50"x16.5"	36	22.004.0	280,00	NO	C
SM	ant / front 3.50"x17"	36	22.005.0	254,00	NO	C
SM	post / rear 4.25"x17"	36	22.006.0	289,00	NO	C
SM	post / rear 4.50"x17"	36	22.007.0	311,00	NO	C
SM	post / rear 5.00"x17"	36	22.008.0	369,00	NO	C
SM	post / rear 5.50"x17"	36	22.009.0	409,00	NO	C
MC	ant / front 1.60"x19"	32	22.010.0	160,00	NO	B
MC	post / rear 1.85"x16"	32	22.011.0	157,00	NO	B



.....
 A richiesta possono essere forniti cerchi EXCEL A60 e DID Dirt Star LTX/STX,
 disponibilità a magazzino non garantita.

EXCEL A60 and DID Dirt Star LTX / STX rims can be supplied on request,
 stock availability not guaranteed.



cerchi rims

SPORT

type	description	code	price	color	discount
MX/EN	ant / front 1.60"x21"	22.000.E	117,00	NO	B
MX	post / rear 1.85"x19"	22.001.E	122,00	NO	B
MX	post / rear 2.15"x19"	22.002.E	137,00	NO	B
EN	post / rear 2.15"x18"	22.003.E	131,00	NO	B



flap

code	description	price	discount
20.953.0	FLAP PLS 21"	3,90	A
20.954.0	FLAP PLS 19"	3,90	A
20.955.0	FLAP PLS 18"	3,90	A

Il flap protegge la camera d'aria dal cerchio e dai nipples coprendo tutte le eventuali parti taglienti.

The Flap is a protection against sharp edges in the rim and nipples.

► **hub and wheel accessories**



disponibili anche con raggi neri
available also with black spokes



kit ricambio raggi+nipples spokes + nipples replacement kit



type	description	code silver spokes	NEW! code black spokes	nipples color	price	discount
MX/EN	ant / front 21" - 12 pz/pcs	20.901.0	20.901.1	AR/BL/NO/RO/SI/VE	29,00	B
SM	ant / front 17" - 12 pz/pcs	20.903.0	20.903.1	AR/BL/NO/RO/SI/VE	29,00	C
SM	ant / front 16,5" - 12 pz/pcs	20.905.0	20.905.1	AR/BL/NO/RO/SI/VE	29,00	C
MX	post / rear 19" - 12 pz/pcs	20.907.0	20.907.1	AR/BL/NO/RO/SI/VE	29,00	B
EN	post / rear 18" - 12 pz/pcs	20.909.0	20.909.1	AR/BL/NO/RO/SI/VE	29,00	B
SM	post / rear 17" - 12 pz/pcs	20.911.0	20.911.1	AR/BL/NO/RO/SI/VE	29,00	C
MC	ant / front 19" - 16 pz / pcs	20.918.0	20.918.1	AR/BL/NO/RO/SI/VE	37,00	B
MC	post / rear 16" - 16 pz / pcs	20.920.0	20.920.1	AR/BL/NO/RO/SI/VE	37,00	B
MC	ant / front 14" - 16 pz / pcs	20.922.0	20.922.1	AR/BL/NO/RO/SI/VE	37,00	B
MC	post / rear 12" - 16 pz / pcs	20.923.0	20.923.1	AR/BL/NO/RO/SI/VE	37,00	B
MC	ant / front 17" - 16 pz / pcs	20.924.0	20.924.1	AR/BL/NO/RO/SI/VE	37,00	B
MC	post / rear 14" - 16 pz / pcs	20.925.0	20.925.1	AR/BL/NO/RO/SI/VE	37,00	B

kit ricambio cuscinetti bearings replacement kit



hub	replacement kit	price	hub	replacement kit	price
20.005.0	30.900.0	43,00	20.705.0	30.919.0	43,00
20.006.0 - 20.006.1	30.901.0	54,00	20.706.0	30.920.0	54,00
20.056.0	30.902.0	54,00	20.711.0	30.921.0	43,00
20.105.0	30.903.0	43,00	20.755.0	30.922.0	43,00
20.106.0	30.904.0	54,00	20.756.0	30.923.0	54,00
20.155.2 - 20.155.3	30.905.0	43,00	20.805.0	30.924.0	43,00
20.156.1	30.906.0	54,00	20.806.0	30.925.0	54,00
20.205.0	30.907.0	43,00	30.105.0	30.926.0	43,00
20.206.0	30.908.0	54,00	30.106.0	30.927.0	54,00
20.255.0	30.911.0	43,00	30.155.0	30.932.0	43,00
20.256.0	30.912.0	54,00	30.156.0	30.933.0	54,00
20.305.0	30.909.0	43,00	40.005.0	30.900.0	43,00
20.306.0	30.910.0	54,00	40.006.1	30.901.0	54,00
20.376.0	30.928.0	54,00	40.105.0	30.903.0	43,00
20.405.0 - 20.405.1	30.915.0	43,00	40.106.0	30.904.0	54,00
20.406.0	30.916.0	54,00	40.205.0	30.907.0	43,00
20.455.0	30.929.0	43,00	40.206.0-0	30.908.0	54,00
20.456.0	30.930.0	54,00	40.206.0-1	30.934.0	54,00
20.505.1	30.913.0	43,00	40.305.0	30.909.0	43,00
20.506.0	30.914.0	54,00	40.306.0	30.910.0	54,00
20.535.1	30.931.0	43,00	40.505.1	30.913.0	43,00
20.556.1	30.914.0	54,00	40.506.0	30.914.0	54,00
20.655.0	30.917.0	43,00	40.535.1	30.931.0	43,00
20.656.0	30.918.0	54,00	40.556.1	30.901.0	54,00

8 times World champion
TONY CAIROLI
Red Bull KTM Factory Racing

in collaborazione con
in collaboration with

alpina





Mousse



distributed in ITALY by KITE



Con la più ampia scelta di dimensioni le mousse MEFO garantiscono il perfetto montaggio su tutte le marche di pneumatico. Disponibili anche misure per minicross.

With the widest range of sizes, MEFO mousse allows to fit all kind of tyre brands. Minicross dimensions are available.

Ogni mousse comprende grasso di montaggio e guanti usa e getta
Every mousse also includes mounting grease and disposable gloves

Articoli a magazzino / Articles on stock

MOM	code	tyre brand	tyre dimension	description	price
MOM 12	35.001.0	tutti/all	80-90/100-12	posteriore/rear - 12"	100,00
MOM 14	35.023.0	tutti/all	60/100 -14	anteriore/front - 14"	100,00
MOM 16 BIG	35.003.0	Pirelli/Bridgestone/Maxxis Michelin / Maxxis	90/100 -16 120/80 -18	posteriore/rear - 16"	100,00
MOM 18-1	35.006.0	Metzeler / Pirelli / Goldentyre Mitas	120/90-18 ** 140/80 -18 140/80 -18	posteriore/rear - 18"	114,00
MOM 18-2	35.007.0	Michelin / Maxxis Metzeler / Pirelli / Goldentyre	140/80 -18	posteriore/rear - 18"	117,00
MOM 18-2 TCS	35.020.0	Tutti/All (no Mitas)	120/90-18 - 140/80/18	posteriore/rear - 18" con camera d'aria integrata	140,00
MOM 18-2 TCT	35.019.0	ricambio camera d'aria MOM18-2 TCS / replacement Tube for 18-2 TCS			20,00
MOM 19 BIG	35.011.0	Pirelli / Bridgestone / Maxxis	70/100 -19	anteriore/front - 19"	100,00
MOM 19-0	35.012.0	Pirelli/Michelin/Dunlop/Kenda	100/90 -19	posteriore/rear - 19"	110,00
MOM 19-1	35.013.0	Pirelli/Michelin/Dunlop/Kenda Michelin Bridgestone	110/90 -19 120/80/19 100/90-19 - 110/80 -19	posteriore/rear - 19"	110,00
MOM 19-2	35.014.0	Pirelli/Dunlop/Bridgestone Bridgestone Pirelli MID SOFT/MX SOFT	120/90 -19 110/90 -19 110/90 -19	posteriore/rear - 19"	110,00
MOM 21	35.016.0	tutti/all	90/90/21 80/100/21	anteriore/front - 21" standard	100,00
MOM 21 BIG	35.017.0	tutti/all	90/90/21 90/100/21	anteriore/front - 21" big	106,00

* MOUSSE EXTREME: miscela supersoft, utilizzare solo per gare di enduro estremo, non è prevista garanzia
EXTREME MOUSSE: supersoft compound, only for extreme race, no warranty

**Effetto "bassa pressione" - Low pressure effect.

Articoli a richiesta / Articles on request

MOM 14 REAR	35.025.0	tutti/all	90/100 -14	posteriore/rear - 14"	100,00
MOM 16	35.002.0	tutti/all	90/100 -16	posteriore/rear - 16"	100,00
MOM 17	35.026.0	tutti/all	70/100 -17	anteriore/front - 17"	100,00
MOM 18	35.004.0	tutti/all	100/100 -18 110/100 -18	posteriore/rear - 18"	109,00
MOM 18-0	35.005.0	Metzeler / Pirelli / Goldentyre/Mitas Mitas	120/90 -18 ** 140/80 -18	posteriore/rear - 18"	109,00
MOM 18-0-EX *	35.021.0	Metzeler / Pirelli / Goldentyre/Mitas Mitas	120/90 -18 140/80 -18	posteriore/rear - 18" EXTREME	131,00
MOM 18-1-EX *	35.022.0	Metzeler / Pirelli / Goldentyre	140/80 -18	posteriore/rear - 18" EXTREME	134,00
MOM 18-3	35.008.0	Michelin	140/80-18-Rally	posteriore/rear - 18" Rally	122,00
MOM 18-4	35.009.0	Michelin	150/70 -18 140/80-18-Rally	posteriore/rear - 18" Rally	134,00
MOM 19	35.010.0	Tutti/All	70/100 -19	anteriore/front - 19"	100,00
MOM 20	35.015.0	tutti/all	90/100 -20	anteriore/front - 20"	106,00
MOM 21 S	35.018.0	tutti/all Mitas / Michelin / Goldentyre	80/100/21 90/90/21 small casing	anteriore/front - 21" small	100,00

TCS mousse

Tube Channel System



La Mefo-Mousse TCS 18" ha un canale per una camera d'aria integrata di 2.6 mm di spessore. È adatta per tutti i pneumatici FIM 140/80-18 da Enduro e 120-140/80-18 da Motocross. Può essere utilizzata con pressione d'aria variabile da 0.4 bar (9 psi) a 2 bar (29 psi), in base al tipo di terreno, alla marca degli pneumatici, alla larghezza del cerchio e al peso del veicolo.

La Mefo mousse TCS può essere continuamente adattata a differenti marche di pneumatici e tipi di terreno durante l'utilizzo all'interno di una competizione! Inoltre, l'uso delle nostre mousse TCS è più ampio rispetto ad altre marche, poiché, anche con la diminuzione della durezza nel tempo, il volume totale può essere regolato cambiando la pressione d'aria, estendendo così la vita della mousse. Il sistema delle mousse TCS permette un'installazione più semplice e più veloce rispetto ad altre marche.

È raccomandato l'uso del fermacopertone.

Mefo Mousse TCS18" has a groove to integrate the of 2.6 mm tube thickness.

It's suitable for all FIM 140/80-18 Enduro and 120-140/80-18 Motocross tyres.

Depending on the terrain, the brand of the tyre and the dimension of the rim, it can be used starting from the pressure of 0.4 bar (9 psi) to 2 bar (29 psi).

Mefo mousse TCS can be adapted to different tyre brands, all terrain types during your competition! This solution lets you use this mousse longer because this system lets you adjust the volume that usually degrades during it's life. TCS System lets you mount it in a better way compared to the other solutions you can find on the market.

Rim lock are recommended.



accessori montaggio mousse

mousse accessories

code	description	price	discount
35.903.0	mounting gel 500 ml	22,00	D
35.904.0	mounting gel 1000 ml	39,00	D
35.905.0	mounting gel 3500 ml	135,00	D
35.906.0	leve montaggio/levers 9"/229 mm	7,00	A
35.907.0	leve montaggio/levers 16"/406 mm	10,00	A

Per fare un buon lavoro ci vogliono gli strumenti giusti. Il Gel MEFO è a base di oli silconici con una bassa concentrazione di solventi, questo permette una maggiore persistenza del gel e una migliore lubrificazione tra copertone e mousse allungando così la vita della mousse stessa.

To do a good job you need the right tools.

The MEFO gel is made of silicon oils with a low concentration of solvents, this give it more durability of the gel and a better lubrication between the tyre and the mousse extending it's life.





pedane MX-EN

MX-EN foot pegs



Il grip elevato, il piano di appoggio maggiorato e il design accattivante fanno delle pedane Kite un prodotto ideale per i piloti vincenti.

The Kite foot pegs give a rest for your feet thanks to a larger width. The special grip and beautiful look are ideal for winners.

brand	model	cc	year	code	color	price
HONDA	CR/CRF	125/250/450	02 ...	29.010.0	RO/SI	137,00
	TC/TE/WR	tutte/all	01 13	29.051.0	RO/SI	137,00
HUSQVARNA	TC/FC	tutte/all (no 85, TC 250)	16 ...	29.100.0	BL/SI/RO	137,00 NEW!
	TC	250	14 ...	29.017.0	BL/SI/RO	137,00
	TE/FE	tutte/all	14 ...	29.017.0	BL/SI/RO	137,00
	KAWASAKI	KX/KXF	125/250/450	06 ...	29.040.0	RO/SI/VE
KTM	SX/SXF	125/250/350/450	16 ...	29.100.0	AR/SI	137,00 NEW!
	SX	250	00 ...	29.017.0	AR/SI	137,00
	EXC/EXCF	125/250/300/350/450	00 ...			
	690/990		00 ...			
SHERCO	SE/SEF	tutte/all	08 ...	29.017.0	BL/SI	137,00
BETA	RR	tutte/all	05 ...	29.017.0	BL/RO/SI	137,00
SUZUKI	RMZ	250	07 09	29.035.0	BL/RO/SI	137,00
			10 ...	29.046.0	BL/RO/SI	137,00
			08 09	29.041.0	BL/RO/SI	137,00
		10 10	29.046.0	BL/RO/SI	137,00	
		12 ...				
11 11	29.070.0	BL/RO/SI	137,00			
YAMAHA	YZ/YZF/WR/WRF	125/250/450	96 ...	29.022.0	BL/RO/SI	137,00

IL KIT PEDANA MX-EN viene fornito con un kit lamine di ricambio. The FOOTPEG KIT MX-EN contains one replacement foils kit.



accessori pedane MX-EN

MX-EN foot pegs accessories



brand	description	type	code	price
HONDA/KAWASAKI/KTM/BETA/SHERCO/ SUZUKI/ YAMAHA	lamina/foil	MX-EN	29.030.0	14,00
HUSQVARNA	lamina/foil	MX-EN	29.068.0	14,00



pedane SM SM foot pegs



Quando l'utilità si unisce all'estetica! Le pedane Kite sono conformi alle regole dei circuiti grazie allo speciale slider che consumandosi durante le curve preserva l'asfalto e le pedane della moto.

The Super Motard foot pegs follow the requirements of the track thanks to the slider that can be changed depending to the wear of the asphalt.

brand	model	cc	year	code	color	price
HONDA	CRF	450	02 ...	29.080.0	RO/SI	137,00
HUSQVARNA	SM	tutte/all	01 13	29.090.0	RO/SI	137,00
	FS	450	14 15	29.085.0	BL/SI	137,00
			16 ...	29.105.0	BL/SI	137,00 NEW!
KTM	SXF/SM	450	16 ...	29.105.0	AR/SI	137,00 NEW!
			00 15	29.085.0	AR/SI	137,00
	SMR	690/990	00 ...	29.085.0	AR/SI	137,00
SHERCO	SEF	450/510	04 ...	29.085.0	BL/SI	137,00
BETA	RR	350/400/450/498/520	05 ...	29.085.0	BL/RO/SI	137,00
SUZUKI	RMZ	450	10 10	29.056.0	BL/RO/SI	137,00
			12 ...	29.075.0	BL/RO/SI	137,00
			11 11	29.075.0	BL/RO/SI	137,00
YAMAHA	YZF	450	96 ...	29.095.0	BL/RO/SI	137,00



accessori pedane SM SM foot pegs accessories

brand	description	type	code	price
HONDA/KAWASAKI/KTM/BETA/SHERCO/SUZUKI/YAMAHA	lamina/foil	SM	29.067.0	14,00
HUSQVARNA 2014 - ...	lamina/foil	SM	29.067.0	14,00
HUSQVARNA 2001 - 2013	lamina/foil	SM	29.069.0	14,00
tutte/all	slider	SM	29.008.0	21,00





piastre forcella MX-EN

MX-EN triple clamps



Le piastre forcella Kite sono le migliori sia per il peso che per il design, oltre a donare un look racing aumentano la precisione dell'avantreno grazie all'alta qualità delle lavorazioni CNC e alla lega d'alluminio di derivazione aeronautica.

The Kite Triple Clamps are the best for weight and design, the high quality of CNC machining and the aeronautical alloy gives optimum precision and a "racing" appeal.

Richiedono kit attacchi manubrio Kite MX-EN (pag.34).

Kite handlebar MX-EN clamps are required (page 34).

*Per applicazioni da minicross scegliere attacchi manubrio di tipo SM (pag. 35).

For minicross applications choose SM handlebar clamp type (page 35).

brand	model	cc	year	offset	code	color	price
HONDA	CR/CRF	125/250/450	02 07	24	11.000.0	NO/RO	301,00
	CRF	250	08 09	22	11.020.0	NO/RO	301,00
			10 ...	20	11.050.0	NO/RO	301,00
	CRF	450	08 08	22	11.020.0	NO/RO	301,00
			09 ...	20	11.050.0	NO/RO	301,00
CRF	150 *	07 ...	28	11.700.0	NO/RO	259,00	
			30	11.710.0	NO/RO	259,00	
HUSQVARNA	TC/TE	250	06 09	18	15.010.0	NO/RO	301,00
			10 13	25	15.030.0	NO/RO	301,00
	TC/TE	450	06 09	25	15.000.0	NO/RO	301,00
			10 10	25	15.030.0	NO/RO	301,00
	TC/TE	449	11 13	15	15.050.0	NO/RO	301,00
				25	15.030.0	NO/RO	301,00
	WR	125/250/300	10 13	15	15.050.0	NO/RO	301,00
				15	15.050.0	NO/RO	301,00
	TE/FE	tutte/all	14 14	20	16.000.0	AR/BL	301,00
				15 ...	22	16.040.0	AR/BL
TC/FC	tutte/all (no 85)	14 ...	22	16.040.0	AR/BL	301,00	
TC	85*	14 ...	14	16.020.0	AR/BL	259,00	
KAWASAKI	KX	125/250	03 11	24	14.000.0	RO/VE	301,00
			04 5	24	14.000.0	RO/VE	301,00
	KXF	250	06 08	24,5	14.010.0	RO/VE	301,00
			09 12	22,5	14.030.0	RO/VE	301,00
			06 08	24	14.020.0	RO/VE	301,00
	KXF	450	09 11	23	14.040.0	RO/VE	301,00
			12 12	23	14.070.0	RO/VE	301,00
		250/450	13 ...	23	14.080.0	RO/VE	301,00

brand	model	cc	year	offset	code	color	price	
KTM	SX/SXF	tutte/all	03	12	20	16.000.0	AR/NO	301,00
			13	...	22	16.040.0	AR/NO	301,00
	EXC/EXCF	tutte/all	03	13	20	16.000.0	AR/NO	301,00
			14	...	22	16.040.0	AR/NO	301,00
			06	...	14	16.020.0	AR/NO	259,00
SX	65 *	12	...	22	16.030.0	AR/NO	259,00	
SUZUKI	RM	125/250	03	09	21,5	13.000.0	BL/RO	301,00
			04	06	24	14.000.0	BL/RO/VE	301,00
			07	09	21,5	13.020.0	BL/RO	301,00
	RMZ	250	10	12	21,5	13.030.0	BL/RO	301,00
			13	15	21,5	13.050.0	BL/RO	301,00
			16	...	21,5	13.080.0	BL/RO	301,00 NEW!
			05	07	21,5	13.020.0	BL/RO	301,00
			08	09	21,5	13.030.0	BL/RO	301,00
			10	12	21,5	13.040.0	BL/RO	301,00
	450		13	14	21,5	13.060.0	BL/RO	301,00
			15	...	21,5	13.070.0	BL/RO	301,00
			00	03	25	12.010.0	BL/RO	301,00
04			05	25	12.000.0	BL/RO	301,00	
06			14	25	12.040.0	BL/RO	301,00	
15			...	25	12.080.0	BL/RO	301,00	
YAMAHA	YZ	125	02	03	25	12.030.0	BL/RO	301,00
			04	05	25	12.020.0	BL/RO	301,00
			06	14	25	12.050.0	BL/RO	301,00
			15	...	25	12.100.0	BL/RO	301,00
			04	05	25	12.000.0	BL/RO	301,00
			06	09	25	12.040.0	BL/RO	301,00
	YZF	250	10	11	25	12.080.0	BL/RO	301,00
			12	...	22	12.090.0	BL/RO	301,00
			02	03	25	12.030.0	BL/RO	301,00
			04	05	25	12.020.0	BL/RO	301,00
			06	07	25	12.050.0	BL/RO	301,00
			08	09	25	12.060.0	BL/RO	301,00
			10	15	22	12.090.0	BL/RO	301,00
			16	...	25	12.110.0	BL/RO	301,00 NEW!
			12	...	25	12.080.0	BL/RO	301,00
WRF	450	12	...	25	12.080.0	BL/RO	301,00	

[sconto/discount B]



ghiere piastre forcella triple clamps nuts

brand	model	year	color	code	price
HONDA	CR/CRF	02 ...	NO/RO	11.007.0	13,00
HUSQVARNA	TC/TE	06 13	NO/RO	15.007.0	13,00
KAWASAKI	KX/KXF	03 ...	RO/VE	14.007.0	13,00
SUZUKI	RM/RMZ	03 ...	BL/NO/RO	13.007.0	13,00
YAMAHA	YZ/YZF	02 ...	BL/RO	12.007.0	13,00

[sconto/discount A]





piastre superiori MX-EN

MX-EN upper plate

Con la soluzione proposta da Kite è possibile sostituire solo le piastre superiori.

Only the upper plate can be changed with the Kite solution.

Richiedono kit attacchi manubrio Kite MX-EN (pag.34).

Kite handlebar MX-EN clamps are required (page 34).

*Per applicazioni da minicross scegliere attacchi manubrio di tipo SM (pag. 35).

For minicross application choose SM handlebar clamps type (page 35).

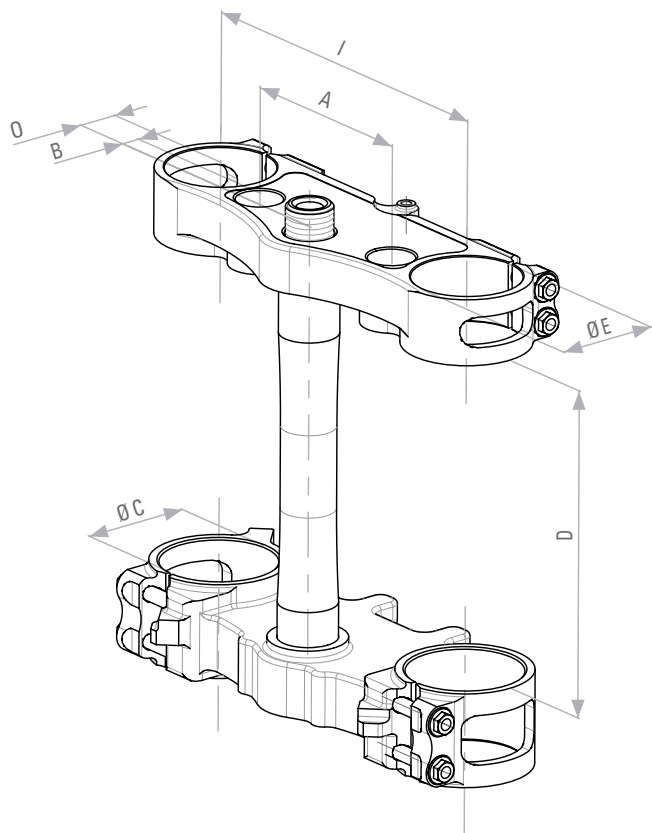


brand	model	cc	year	offset	code	color	price
HONDA	CR/CRF	125/250/450	02 07	24	11.004.0	NO/RO	121,00
	CRF	250	08 09	22	11.024.0	NO/RO	121,00
		450	08 08				
	CRF	250	10 ...	20	11.054.0	NO/RO	121,00
		450	09 ...				
CRF	150 *	07 ...	28	11.704.0	NO/RO	103,00	
HUSQVARNA	TC/TE	450	06 09	25	15.004.0	NO/RO	121,00
	TC/TE	250	06 09	18	15.014.0	NO/RO	121,00
		450	10 10				
	TC/TE	250	10 13	25	15.034.0	NO/RO	121,00
		449	11 13				
WR	125/250/300	10 13					
KAWASAKI	KXF	250	06 08	24,5	14.014.0	RO/VE	121,00
	KXF	450	06 08	24	14.024.0	RO/VE	121,00
	KXF	250	09 12	22,5	14.034.0	RO/VE	121,00
	KXF	450	09 11	23	14.044.0	RO/VE	121,00
KTM	SX	85 *	06 ...	14	16.024.0	AR/NO	103,00
	SX	65 *	08 ...	22	16.034.0	AR/NO	103,00
SUZUKI	RMZ	250	07 09	21,5	13.024.0	BL/RO	121,00
		450	05 07				
	RMZ	250	10 ...	21,5	13.034.0	BL/RO	121,00
		450	08 09				
RMZ	450	10 ...	21,5	13.044.0	BL/RO	121,00	
YAMAHA	YZ/YZF	125/250/450	04 05	25	12.004.0	BL/RO	121,00
	YZ	125/250	06 ...				
	YZF	250	06 11	25	12.044.0	BL/RO	121,00
		450	06 09				
	YZF	450	16 ...	25	12.114.0	BL/RO	121,00
450		10 15					
		250	12 ...	22	12.094.0	BL/RO	121,00

piastre forcella MX-EN - scheda tecnica

MX-EN triple clamps - data sheet

code	I	O	A	B	Ø C	D	Ø E	clamps
11.000.0	192	24	102	10	58,5	180	53	MX
11.020.0	192	22	102	8	58,5	180	53	MX
11.050.0	192	20	102	10	59	180	54	MX
11.700.0	182	28	80	0-20	50,5	140	46	MC
11.710.0	182	30	80	0-20	50,5	140	46	MC
12.000.0	190	25	102	12,5	59	180	56	MX
12.010.0	190	25	102	12,5	58,5	180	54	MX
12.020.0	190	25	102	12,5	59	190	56	MX
12.030.0	190	25	102	12,5	58,5	190	54	MX
12.040.0	192	25	102	10	59	180	56	MX
12.050.0	192	25	102	10	59	190	56	MX
12.060.0	192	25	102	10	59	185	56	MX
12.080.0	192	25	102	5/20	59	185	56	MX
12.090.0	192	22	102	5/20	59	185	54	MX
12.100.0	192	25	102	5/20	59	185	56	MX
12.110.0	192	25	102	5/20	59	185	54	MX
13.000.0	190	21,5	102	7,5	58,5	175	55	MX
13.020.0	190	21,5	102	14	58,5	175	55	MX
13.030.0	190	21,5	102	10	58,5	175	55	MX
13.040.0	190	21,5	102	10	58,5	185	55	MX
13.050.0	190	21,5	102	10	59,2	185	55	MX
13.060.0	190	21,5	102	10	59,2	180	55	MX
13.070.0	190	21,5	102	10	59,2	204	55	MX
13.080.0	190	21,5	102	10	59,2	180	55	MX
14.000.0	190	24	102	10	59	170	56	MX
14.010.0	190	24,5	102	10	58,5	185	53	MX
14.020.0	190	24	102	9,5	59	185	54	MX
14.030.0	190	22,5	102	10	58,5	185	53	MX
14.040.0	190	23	102	9,5	59	185	54	MX
14.070.0	190	23	102	9,5	59	185	54	MX
14.080.0	190	23	102	9,5	59	185	54	MX
15.000.0	200	25	102	18	61	185	58	MX
15.010.0	200	18	102	11	61	185	58	MX
15.030.0	200	25	102	18	59,3	185	54	MX
15.050.0	192	15	93	8-20	59,3	185	54	MX
16.000.0	190	20	102	16	60	185	54	MX
16.020.0	175	14	80	9-29	52,5	150	49	MC
16.030.0	160	22	75	13-33	48	155	44	MC
16.040.0	190	22	102	16	60	185	54	MX



EMX250 European championship
JOAKIN FURBETTA
De Carli Racing
Junior Team



Ph. De Carli Racing

in collaborazione con
 in collaboration with





piastre forcella SM

SM triple clamps



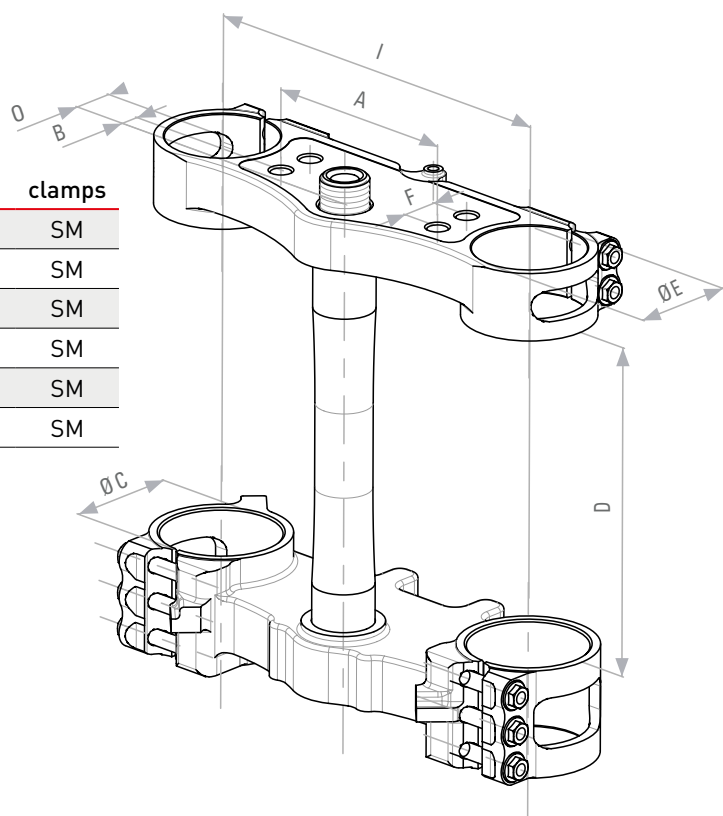
Richiedono kit attacchi manubrio Kite tipo SM (pag.35).
Kite handlebar SM clamps are required (page 35).

brand	model	cc	year	code	color	price
HONDA	CRF	450	09 ...	11.030.0	NO/RO	301,00
	CRF	450	08 08	11.040.0	NO/RO	301,00
HUSQVARNA	SM	450/510	08 10	15.020.0	NO/RO	301,00
SUZUKI	RMZ	450	08 09	13.500.0	BL/RO	301,00
	RMZ	450	10 12	13.510.0	BL/RO	301,00
YAMAHA	YZF	450	08 09	12.070.0	BL/RO	301,00

piastre forcella SM - scheda tecnica

SM triple clamps - data sheet

code	I	O	A	B	Ø C	D	Ø E	F	clamps
11.030.0	200	20-18	102	7	59	180	54	20	SM
11.040.0	200	22-20	102	7	58,5	180	53	20	SM
12.070.0	200	25-23	102	10	59	185	56	20	SM
13.500.0	200	21,5-19,5	102	10	58,5	170	55	20	SM
13.510.0	200	21,5-19,5	102	10	58,5	180	55	20	SM
15.020.0	205	17-15	102	3	61	170	58	20	SM



2nd S1 Italian Championship
ANDREA OCCHINI
Biker Racing Team



in collaborazione con
in collaboration with



1st S1 Italian Championship
2nd S1 World Championship
IVAN LAZZARINI
L30 Racing



in collaborazione con
in collaboration with





kit attacchi manubrio MX-EN

MX-EN handlebar clamps kit

handlebar	code	color	price
ø 22 - 7/8"	10.005.A	AR/BL/NO/RO/VE	26,00
	10.202.A	BL/NO/RO	
	10.302.A	AR/BL/NO/RO/VE	
ø 28,6 - 11/8"	10.005.B	AR/BL/NO/RO/VE	26,00
	10.202.B	BL/NO/RO	
	10.302.B	AR/BL/NO/RO/VE	

10.005. A ø 22
10.005. B ø 28,6

10.302. A ø 22
10.302. B ø 28,6

10.202. A ø 22
10.202. B ø 28,6



per piastra kite
for kite triple clamps



per piastra Honda originale
e attacchi inferiori Kite
for Honda original triple clamps
and Kite lower clamp

ATTACCO SUPERIORE MX-EN-SM MX-EN-SM UPPER CLAMP



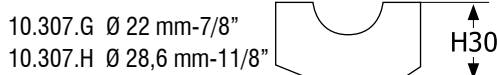
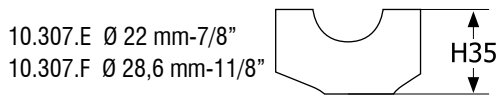
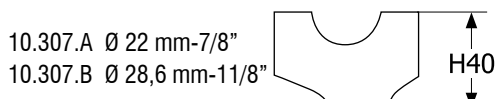
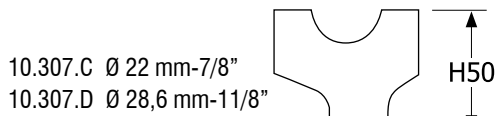
handlebar	h mm	code	color	price
ø 22 - 7/8"	30	10.307.G	SI	37,00
	35	10.307.E		
	40	10.307.A		
	50	10.307.C		
ø 28,6 - 11/8"	30	10.307.H	SI	37,00
	35	10.307.F		
	40	10.307.B		
	50	10.307.D		

ATTACCO INFERIORE MX-EN MX-EN LOWER CLAMP



A ricambio è possibile
fornire i kit perni
Only for spare parts is
available the pins axle kit

10.903.A	H40	18,00
10.903.B	H35	18,00
10.903.C	H50	18,00
10.903.D	H30	18,00



DISPOSITIVO DI FISSAGGIO MX-EN MX-EN CLAMP SYSTEM

code	description	price
10.004.0	rigido/rigid	19,00
10.006.0	antivibranti/rubber	19,00



[4x]

10.004.0



[4x]

10.006.0





kit attacchi manubrio SM-Minicross

SM-Minicross handlebar clamps kit

handlebar	code	color	price
ø 22 - 7/8"	10.005.A	AR/BL/NO/RO/VE	26,00
	10.302.A	AR/BL/NO/RO/VE	
ø 28,6 - 11/8"	10.005.B	AR/BL/NO/RO/VE	26,00
	10.302.B	AR/BL/NO/RO/VE	

ATTACCO SUPERIORE MX-EN-SM MX-EN-SM UPPER CLAMP



10.005. A ø 22
10.005. B ø 28,6



10.302. A ø 22
10.302. B ø 28,6



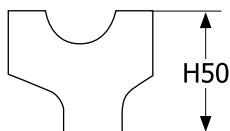
per piastra Kite
for Kite triple clamps

handlebar	h mm	code	color	price
ø 22 - 7/8"	35	10.007.E	SI	31,00
	40	10.007.A		
	50	10.007.C		
ø 28,6 - 11/8"	35	10.007.F	SI	31,00
	40	10.007.B		
	50	10.007.D		

ATTACCO INFERIORE SM-MC SM-MC LOWER CLAMP



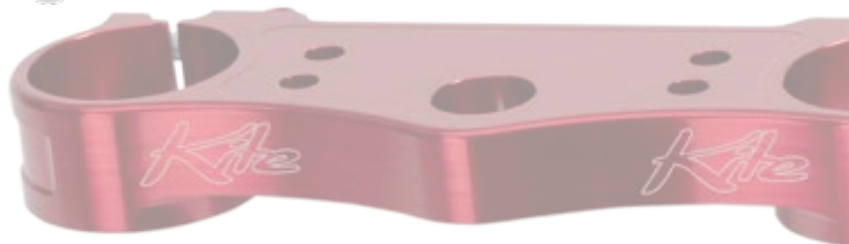
10.007.C ø 22 mm-7/8"
10.007.D ø 28,6 mm-11/8"



10.007.A ø 22 mm-7/8"
10.007.B ø 28,6 mm-11/8"



10.007.E ø 22 mm-7/8"
10.007.F ø 28,6 mm-11/8"



MX-EN



SM



attacchi manubrio superiori originali **OEM upper clamps**

solo per piastre forcella originali /only for OEM triple clamps

brand	model	cc	year	handlebar	code	color	price
HONDA	CR/CRF	tutte/all		ø 22 - 7/8"	10.308.0	NO/RO	26,00
HUSQVARNA	TC	tutte/all	... 10	ø 28,6 - 11/8"	10.313.0	NO/RO	26,00
	TC/FC	tutte/all	14 ...	ø 28,6 - 11/8"	10.310.0	BL/NO	26,00
KAWASAKI	KX/KXF	tutte/all	05 ...	ø 22 - 7/8"	10.311.0	RO/VE	26,00
KTM	EXC/EXCF	tutte/all	07	ø 28,6 - 11/8"	10.310.0		26,00
		tutte/all	08 ...	ø 28,6 - 11/8"	10.310.1	AR/NO	26,00
	SX/SXF	tutte/all		ø 28,6 - 11/8"			
SUZUKI	RM	tutte/all	06 ...	ø 28,6 - 11/8"	10.312.0	BL/RO	26,00
	RMZ	250	07 ...	ø 28,6 - 11/8"			
	RMZ	450	04 ...	ø 28,6 - 11/8"			
YAMAHA	YZ	tutte/all	07 ...	ø 28,6 - 11/8"	10.309.0	BL/RO	26,00
	YZF	tutte/all	06 ...	ø 28,6 - 11/8"			





manubri handlebars



KIT MANUBRIO + PARACOLPI HANDLEBAR + PAD KIT

Affidabilità e sicurezza sono le principali caratteristiche quando pensi ai manubri KITE.

Reliability and safety are the main features when you think of KITE handlebars.

	dimensions		code	color	price
ø 22 - 7/8"	piega/fold Honda		25.007.0	AN/NO/RO/SI	55,00
	piega alta/high fold		25.008.0	AN/NO/RO/SI	55,00
ø 28,6 - 11/8"	piega/fold Honda		25.009.0	AN/NO/RO/SI	94,00
	piega alta/high fold		25.010.0	AN/NO/RO/SI	94,00
ø 28,6 - 11/8"	minicross 85		25.014.0	NO	94,00 NEW!
ø 22 - 7/8"	minicross 65		25.012.0	NO	55,00 NEW!



PARACOLPI MANUBRIO HANDLEBAR PAD

dimensions	code	price
ø 22	25.005.0	10,00
ø 28,6	25.006.0	18,00



dispositivo di partenza launch control



HOLESHOT!

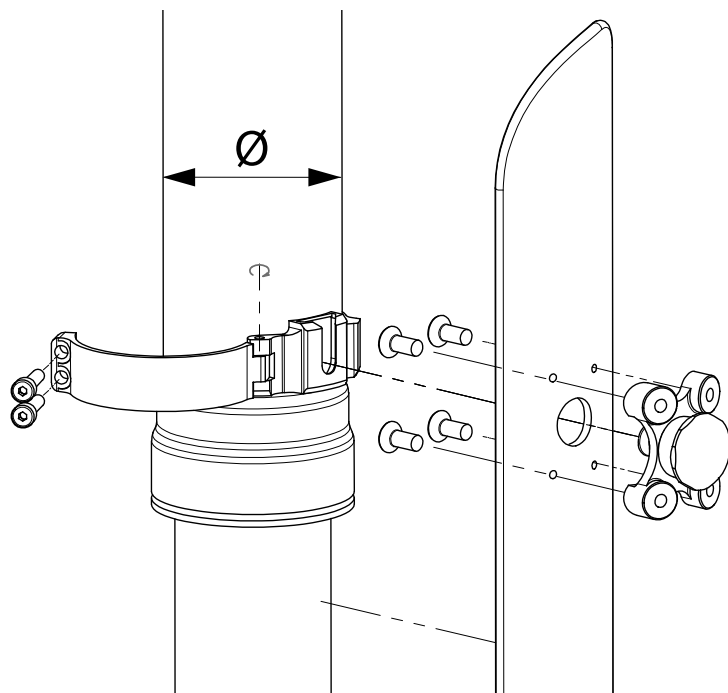
Il dispositivo di partenza Kite è il modo migliore per battere gli avversari già dal cancelletto e trovarsi davanti a tutti fin dalla prima curva!

The Kite Launch Control is the best way to beat the other riders just out of the gate!

Il dispositivo di partenza Kite può essere montato senza dover rimuovere la forcella dalle piastre.

The Kite starting device can be mounted without removing the fork from the triple clamps.

brand	model	cc	year	application	code	color	price
HONDA	CRF	250/450	09 ...	Ø 57mm	18.230.0	RO/VE/BL/AR	89,00
				Ø 54mm	18.250.0	RO/VE/BL/AR	89,00
KAWASAKI	KXF	250/450	09 ...	Ø 54mm	18.250.0	RO/VE/BL/AR	89,00
KTM	SX/SXF	125/250/350/450/500	03 ...	Ø 59mm	18.240.0	RO/VE/BL/AR	89,00
				Ø 54mm	18.250.0	RO/VE/BL/AR	89,00
HUSQVARNA	TC/FC	tutte/all (no 85)	14 ...	Ø 59mm	18.240.0	RO/VE/BL/AR	89,00
				Ø 54mm	18.250.0	RO/VE/BL/AR	89,00
SUZUKI	RMZ	250/450	10 ...	Ø 54mm	18.250.0	RO/VE/BL/AR	89,00
YAMAHA	YZ/YZF	125/250/450	08 ...	Ø 54mm	18.250.0	RO/VE/BL/AR	89,00





Ph. BrownDogWilson

3rd AMA 450 National Championship
JUSTIN BARCIA
Yamaha JGRmx



kit tubi silicone MX-EN-SM

MX-EN-SM silicon hoses kit



Pressione del liquido sotto controllo, minori perdite di carico su tutto il circuito di raffreddamento e design con la qualità dei tubi al silicone Kite.

Liquid pressure under control, less yield losses on the cooling system and a better design with the Kite silicon hoses.

brand	model	cc	year	code	color	price
HONDA	CRF	450	02 04	21.508.0	BL/RO	81,00
			05 08	21.500.0	BL/RO	72,00
			09 12	21.520.0	BL/RO	106,00
			13 14	21.536.0	BL/RO	131,00
			15 ...	21.542.0	BL/RO	186,00
		450X	05 08	21.512.0	BL/RO	66,00
		250	04 09	21.501.0	BL/RO	75,00
			10 13	21.525.0	BL/RO	60,00
			14 15	21.539.0	BL/RO	151,00
			16 ...	21.546.0	BL/RO	** NEW!
150	07 ...		21.511.0	BL/RO	50,00	
HUSQVARNA	TC/TE*	250/310	10 13	21.530.0	BL/RO	119,00
	TC/TE*	250/300	14 ...	21.531.0	AR/BL	53,00
	TE	125	14 ...	21.545.0	AR/BL	74,00
	TC	125	14 15	21.545.0	AR/BL	74,00
			16 ...	21.547.0	AR/BL	** NEW!
	FC	250/350	14 15	21.533.0	AR/BL	84,00
			16 ...	21.548.0	AR/BL	** NEW!
			14 15	21.538.0	AR/BL	50,00
			16 ...	21.549.0	AR/BL	** NEW!
	FE*	250/350	14 ...	21.544.0	AR/BL	109,00
450/501		14 ...	21.534.0	AR/BL	61,00	
KAWASAKI	KXF	450	06 08	21.502.0	BL/VE	88,00
			09 ...	21.522.0	BL/VE	69,00
		250	06 08	21.509.0	BL/VE	84,00
			09 ...	21.521.0	BL/VE	69,00

brand	model	cc	year	code	color	price	
YAMAHA	YZF	250	06 09	21.505.0	BL/RO	53,00	
			02 05	21.515.0	BL/RO	91,00	
			10 13	21.528.0	BL/RO	86,00	
			14 ...	21.540.0	BL/RO	146,00	
	WRF	250	03 09	21.504.0	BL/RO	48,00	
			10 13	21.527.0	BL/RO	98,00	
		450	14 ...	21.541.0	BL/RO	142,00	
			07 14	21.515.0	BL/RO	91,00	
			03 09	21.516.0	BL/RO	41,00	
			12 15	21.528.0	BL/RO	86,00	
KTM	SX	450	04 06	21.513.0	AR/BL	100,00	
		85	06 12	21.529.0	AR/BL	106,00	
		125	07 15	21.545.0	AR/BL	74,00	
			16 ...	21.547.0	AR/BL	** NEW!	
	EXC*	125	08 ...	21.545.0	AR/BL	74,00	
	EXC*	450/525	04 07	21.523.0	AR/BL	120,00	
	EXC*/SX	250/300	8 ...	21.531.0	AR/BL	53,00	
	SXF	250/350	07 10	21.519.0	AR/BL	41,00	
			13 15	21.533.0	AR/BL	84,00	
			16 ...	21.548.0	AR/BL	** NEW!	
		350	11 15	21.533.0	AR/BL	84,00	
			07 10	21.518.0	AR/BL	35,00	
			450	11 12	21.535.0	AR/BL	38,00
				13 15	21.538.0	AR/BL	50,00
				16 ...	21.549.0	AR/BL	** NEW!
		EXCF*	350	12 ...	21.544.0	AR/BL	109,00
250			14 ...				
			08 13	21.524.0	AR/BL	67,00	
450/500			12 ...	21.534.0	AR/BL	61,00	
400/450/530	08 11		21.517.0	AR/BL	83,00		
SUZUKI	RMZ		450	08 14	21.506.0	BL/GI/RO	69,00
		05 07		21.514.0	BL/GI	88,00	
		15 ...		21.543.0	BL/GI/RO	161,00	
		07 09		21.507.0	BL/GI	72,00	
	250	10 12	21.526.0	BL/GI/RO	81,00		
		13 ...	21.537.0	BL/GI/RO	107,00		

*I kit prevedono l'eliminazione del termostato
The kits require the elimination of the thermostat

** Prodotto nuovo - in arrivo
New product - coming soon

[sconto/discount B]

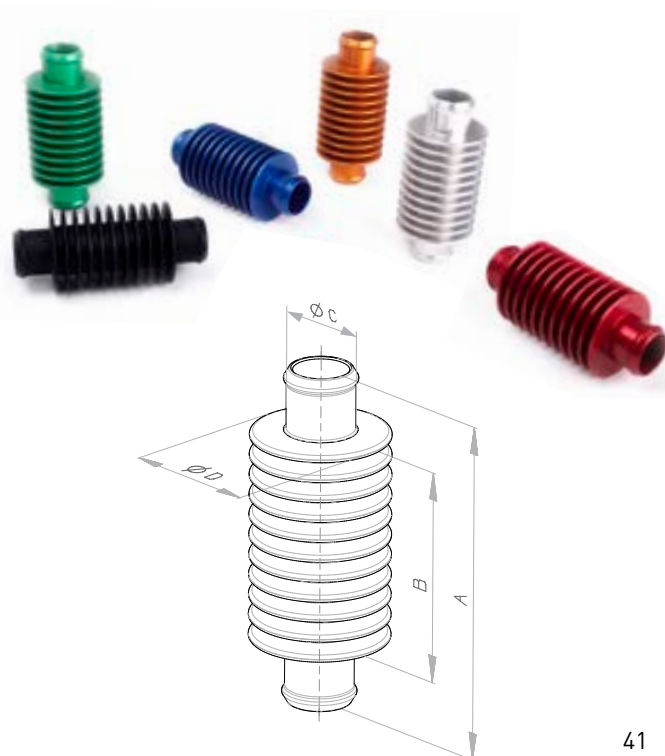


scambiatori di calore heat exchangers

Se hai problemi di temperatura risolvi con gli scambiatori di calore Kite. Con poca spesa e con un tocco estetico risolvi un problema scomodo.

If you have some trouble with the temperature you can easily solve it in a cheaper way with the heat exchanger.

code	color	Ø C	Ø D	A	B	price
09.030.0	AR/BL/NO/RO/SI/VE	19,5	40	100	63	22,00
09.031.0	AR/BL/NO/RO/SI/VE	14,5	40	60	33	17,00
09.032.0	AR/BL/NO/RO/SI/VE	19,5	40	70	33	17,00
09.033.0	NO/RO	19,5	40	154	117	31,00
09.034.0	AR/BL/NO/RO/SI/VE	17,5	40	70	33	17,00
09.035.0	AR/BL/NO/RO/SI/VE	24	45	100	63	22,00
09.036.0	AR/BL/NO/RO/SI/VE	17,5	40	100	63	22,00



► **silicon hoses accessories**
[sconto/discount A]



kit moto bike kit

NEW!

**risparmia il 15% sul prezzo dei pezzi singoli
save 15% on the price of single pieces**

brand	model	cc	year	clutch cover	front brake cover	rear brake oil tanks	rear brake connecting rods	hydraulic clutch brake clamp	clutch perch clamp	engine caps	oil filter cover	engine oil cap	engine oil cap (type 2)	axle blocks	triple clamps nut	rim lock nut (2 pcs)	gas tank air vent valve	kit code	color	price	
HONDA	CR	125/250	00 07	-	✓	✓	✓	✓	✓	-	-	✓	-	✓	✓	✓	✓	09.301.0	BL/RO	170,00	
		150	07 ...	-	✓	✓	✓	✓	✓	-	-	✓	-	✓	-	✓	✓	09.302.0	BL/RO	170,00	
	CRF	250	04 09	-	✓	✓	✓	✓	✓	✓	-	✓	✓	✓	✓	✓	✓	✓	09.303.0	BL/RO	207,00
			10 ...	-	✓	✓	✓	✓	✓	✓	✓	-	✓	✓	✓	✓	✓	✓	09.304.0	BL/RO	202,00
		450	02 ...	-	✓	✓	✓	✓	✓	✓	-	✓	✓	✓	✓	✓	✓	✓	09.305.0	BL/RO	202,00
KAWASAKI	KX	125/250	03 ...	-	✓	✓	✓	✓	✓	-	-	✓	-	✓	✓	✓	✓	09.306.0	BL/VE	170,00	
		250	06 10	-	✓	✓	✓	✓	✓	✓	-	✓	-	✓	✓	✓	✓	✓	09.307.0	BL/VE	189,00
	KXF	450	06 ...	-	✓	✓	✓	✓	✓	✓	-	✓	-	✓	✓	✓	✓	✓	09.308.0	BL/VE	189,00
			06 ...	-	✓	✓	✓	✓	✓	✓	-	✓	-	✓	✓	✓	✓	✓	09.308.0	BL/VE	189,00
SUZUKI	RM	125/250	03 09	-	✓	✓	✓	✓	✓	-	-	✓	-	✓	✓	✓	✓	09.309.0	BL/RO	170,00	
		250	04 06	-	✓	✓	✓	✓	✓	-	-	✓	-	✓	✓	✓	✓	09.310.0	BL/RO	170,00	
	RMZ	450	07 ...	-	✓	✓	✓	✓	✓	✓	-	✓	-	✓	✓	✓	✓	✓	09.311.0	BL/RO	189,00
			05 ...	-	✓	✓	✓	✓	✓	✓	-	✓	-	✓	✓	✓	✓	✓	09.311.0	BL/RO	189,00
YAMAHA	YZ WR	125/250	04 07	-	✓	✓	✓	✓	✓	-	-	✓	-	✓	✓	✓	✓	09.312.0	BL/RO	170,00	
		08 ...	-	✓	✓	✓	✓	✓	✓	-	-	✓	-	✓	✓	✓	✓	09.313.0	BL/RO	170,00	
	YZF	250	09 13	-	✓	✓	✓	✓	✓	✓	-	✓	-	✓	✓	✓	✓	✓	09.314.0	BL/RO	189,00
			14 ...	-	✓	✓	✓	✓	✓	✓	-	✓	-	✓	✓	✓	✓	✓	09.315.0	BL/RO	189,00
	WRF	450	10 ...	-	✓	✓	✓	✓	✓	✓	-	✓	-	✓	✓	✓	✓	✓	09.315.0	BL/RO	189,00
			15 ...	-	-	✓	✓	✓	✓	✓	-	✓	-	✓	✓	✓	✓	✓	09.316.0	BL/RO	175,00
HUSQVARNA	TE	125	14 ...	✓	✓	✓	-	✓	-	-	✓	-	✓	-	✓	✓	✓	09.317.0	AR/BL	146,00	
		250/300	14 ...	✓	✓	✓	-	✓	✓	-	✓	-	✓	-	✓	✓	✓	09.318.0	AR/BL	160,00	
	FE	450	14 ...	✓	✓	✓	-	✓	✓	-	✓	-	✓	-	✓	✓	✓	09.318.0	AR/BL	160,00	
			14 15	✓	✓	✓	-	✓	-	✓	-	✓	-	✓	-	✓	✓	✓	09.317.0	AR/BL	146,00
	TC	250	16 ...	✓	✓	✓	-	✓	-	✓	-	✓	-	✓	-	✓	✓	09.320.0	AR/BL	146,00	
			14 ...	✓	✓	✓	-	✓	✓	-	✓	-	✓	-	✓	✓	✓	09.318.0	AR/BL	160,00	
	FC	250/350	14 15	✓	✓	✓	-	✓	✓	✓	✓	✓	-	✓	-	✓	✓	✓	09.319.0	AR/BL	189,00
			16 ...	✓	✓	✓	-	✓	-	✓	✓	✓	-	✓	-	✓	✓	✓	09.327.0	AR/BL	175,00
		450	14 15	✓	✓	✓	-	✓	✓	-	✓	-	✓	-	✓	-	✓	✓	09.318.0	AR/BL	160,00
			16 ...	✓	✓	✓	-	✓	-	✓	✓	-	✓	-	✓	-	✓	✓	09.328.0	AR/BL	164,00
KTM	SX	125	13 15	✓	✓	✓	-	✓	-	-	✓	-	✓	-	✓	✓	✓	09.320.0	AR/BL	146,00	
			16 ...	✓	✓	✓	-	✓	✓	-	✓	-	✓	-	✓	✓	✓	09.321.0	AR/BL	160,00	
		250	13 ...	✓	✓	✓	-	✓	✓	-	✓	-	✓	-	✓	✓	✓	09.321.0	AR/BL	160,00	
	SXF	250/350	13 15	✓	✓	✓	-	✓	✓	✓	✓	✓	-	✓	-	✓	✓	✓	09.322.0	AR/BL	189,00
			16 ...	✓	✓	✓	-	✓	✓	✓	✓	✓	-	✓	-	✓	✓	✓	09.323.0	AR/BL	189,00
		450	13 15	✓	✓	✓	-	✓	✓	-	✓	-	✓	-	✓	-	✓	✓	09.321.0	AR/BL	160,00
			16 ...	✓	✓	✓	-	✓	✓	-	✓	-	✓	-	✓	-	✓	✓	09.326.0	AR/BL	178,00
	EXC	250/300	125	09 ...	✓	✓	✓	-	✓	-	-	✓	-	✓	-	✓	✓	✓	09.317.0	AR/BL	146,00
			09 ...	✓	✓	✓	-	✓	✓	-	✓	-	✓	-	✓	-	✓	✓	09.318.0	AR/BL	160,00
	EXCF	250	07 13	✓	✓	✓	-	✓	✓	-	✓	✓	-	✓	-	✓	✓	✓	09.325.0	AR/BL	178,00
			14 ...	✓	✓	✓	-	✓	✓	✓	✓	✓	-	✓	-	✓	✓	✓	09.319.0	AR/BL	189,00
350		12 ...	✓	✓	✓	-	✓	✓	✓	✓	✓	-	✓	-	✓	✓	✓	09.319.0	AR/BL	189,00	
		450	10 ...	✓	✓	✓	-	✓	✓	-	✓	-	✓	-	✓	✓	✓	09.318.0	AR/BL	160,00	

clutch cover - p. 50



front brake cover - p. 50



rear brake oil tanks - p. 51



rear brake connecting rods - p. 50



hydraulic clutch/brake clamp - p. 49
clutch perch clamp - p. 49



engine caps - p. 48



oil filter cover - p. 48



engine oil cap - p. 47



engine oil cap (type 2) - p. 47



axle blocks - p. 44



triple clamps nut - p. 29



rim lock nuts - p. 20



gas tank air vent valve - p. 48





registri tendicatena axle blocks

LIGHT



I registri tendicatena Light sono una soluzione efficace quando si vuole cambiare la corona velocemente aumentando o diminuendo un dente senza dover modificare la regolazione dei registri.

The Light axle blocks are an excellent solution when you want to change the sprocket without moving the chain setting.

brand	model	cc	year	code	color	price
HONDA	CR/CRF	125/250/450	02 ...	19.310.0	NO/RO	38,00
	CRF	150	07 ...	19.050.0	NO/RO	33,00
HUSQVARNA	tutti/all	tutte/all	01 13	19.060.0	NO/RO	38,00
	TE/FE	tutte/all	14 ...	19.380.0	AR/BL	38,00
	FS	450	15 ...	19.390.0	AR/BL	38,00
	FC	250/350/450	14 15	19.380.0	AR/BL	38,00
			16 ...	19.390.0	AR/BL	38,00 NEW!
	TC	125	14 15	19.380.0	AR/BL	38,00
16 ...			19.390.0	AR/BL	38,00 NEW!	
TC	250	14 ...	19.380.0	AR/BL	38,00	
KAWASAKI	KX/KXF	125/250/450	05 ...	19.340.0	BL/RO/VE	38,00
KTM	SX/SXF	tutte/all	13 ...	19.390.0	AR/NO	38,00
			04 12	19.380.0	AR/BL	38,00
	EXC/EXCF	tutte/all	04 ...	19.380.0	AR/BL	38,00
SUZUKI	RM	125/250	00 ...	19.030.0	BL/RO	38,00
	RMZ	250/450	05 ...	19.340.0	BL/RO/VE	38,00
YAMAHA	YZ/WR	125/250	03 ...			
	WRF	250 450	03 ...	19.320.0	BL/RO	38,00
			03 ...			
	YZF	250/450	03 08	19.320.0	BL/RO	38,00
09 ...			19.323.0	BL/RO	38,00	
YZFX	250	14 ...	19.320.0	BL/RO	38,00	





registri tendicatena
axle blocks

QUICK RACING



I registri tendicatena Quick racing permettono un veloce cambio corona e restano montati sulla moto permettendo un cambio gomme più rapido.

The Quick Racing axle blocks are excellent when you want to change the sprocket without to move the chain setting. They are mounted on the swing arm so you can change the wheel quickly.

brand	model	cc	year	code	color	price
HONDA	CR/CRF	125/250/450	02 ...	19.213.0	NO/RO	48,00
HUSQVARNA	tutti/all	tutte/all	01 13	19.260.0	NO/RO	48,00
KAWASAKI	KX	125/250	05 ...	19.240.0	RO/VE	48,00
	KXF	250/450	05 ...			
SUZUKI	RMZ	250	07 ...	19.230.0	BL/RO	48,00
	RMZ	450	05 ...			
YAMAHA	YZF	250/450	09 ...	19.223.0	BL/RO	48,00





cilindri frizione Brembo **Brembo clutch cylinders**

La forma del cilindro frizione è studiata per evitare problemi quando il fango e i sassi spostano la catena sul pignone compromettendo il funzionamento della frizione.

The shape of the clutch slave cylinder is designed to avoid problem when mud and rocks move the chain off the sprocket.



brand	model	cc	year	code	color	price
KTM	SXF	250	07 12	18.016.0	AR	60,00
			13 15	18.008.0	AR	60,00
		350	11 15	18.008.0	AR	60,00
		250/350	16 ...	18.018.0	AR	60,00 NEW!
		450	13 ...	18.016.0	AR	60,00
	SX	125	16 ...	18.018.0	AR	60,00 NEW!
		SX/EXC	250/300	06 ...	18.016.0	AR
	EXCF	250	07 13	18.016.0	AR	60,00
			14 ...	18.008.0	AR	60,00
		350	11 ...	18.008.0	AR	60,00
400/450/500		08 ...	18.016.0	AR	60,00	
HUSQVARNA	FC	250/350	14 15	18.008.0	BL	60,00
			16 ...	18.018.0	BL	60,00 NEW!
	FE	250/350	14 ...	18.008.0	BL	60,00
	FC/FE	450/501	14 ...	18.016.0	BL	60,00
	TC/TE	250/300	14 ...	18.016.0	BL	60,00
	TC	125	16 ...	18.018.0	BL	60,00 NEW!



tappi olio motore engine oil caps



brand	model	cc	year	type	code	color	price
HM	CRE	50	07 ...	-	09.124.0	NO/RO	12,00
HONDA	CR/CRF	tutte/all	00 ...	-	09.010.0	BL/NO/RO/VE	12,00
	CRF (olio cambio/gear box)	250	10 ...	-	09.143.0	NO/RO	12,00
			10 ...	level	09.144.0	NO/RO	15,00
			09 09	level	09.145.0	NO/RO	15,00
		450	09 ...	level	09.146.0	NO/RO	15,00
HUSQVARNA	tutti/all	tutte/all	01 13	-	09.151.0	NO/RO	12,00
	TC/TE/FC/FE	tutte/all	14 ...	-	09.110.0	BL/NO	12,00
KAWASAKI	KX	125/250	03 ...	-	09.010.0	BL/RO/VE	12,00
	KXF	250/450	04 ...	-	09.013.0	BL/RO	12,00
KTM	SX/SXF/EXC/EXCF	tutte/all	00 ...	-	09.110.0	AR/NO	12,00
BETA	RR	tutte/all	04 ...	-	09.110.0	RO/NO	12,00
SHERCO	SE/SEF	tutte/all	14 ...	-	09.110.0	BL/NO	12,00
MINARELLI	AM6		07 ...	-	09.124.0	NO/RO	12,00
SUZUKI	RM	tutte/all	00 ...				
		450	05 ...	-	09.012.0	BL/RO	12,00
	RMZ	250	07 ...				
			04 06	-	09.013.0	BL/RO/VE	12,00
YAMAHA	YZ/YZF/WR/WRF	125/250/450	00 ...	-	09.010.0	BL/RO/VE	12,00



tappi olio motore esagonali exagonal engine oil caps



brand	model	cc	year	code	color	price
HONDA	CR/CRF	tutte/all	00 07	09.010.2	BL/NO/RO	12,00
HUSQVARNA	tutti/all	tutte/all	01 13	09.151.2	NO/RO	12,00
	TC/TE/FC/FE	tutte/all	14 ...	09.110.2	BL/NO	12,00
KAWASAKI	KX	125/250	03 ...	09.010.2	BL/RO/VE	12,00
	KXF	250/450	04 ...	09.013.2	BL/NO/RO/VE	12,00
KTM	SX/SXF/EXC/EXCF	tutte/all	00 ...	09.110.2	AR/NO	12,00
BETA	RR	tutte/all	04 ...	09.110.2	RO/NO	12,00
SHERCO	SE/SEF	tutte/all	14 ...	09.110.2	BL/NO	12,00
SUZUKI	RM	tutte/all	00 ...			
		450	05 ...	09.012.2	BL/RO	12,00
	RMZ	250	07 ...			
			04 06	09.013.2	BL/NO/RO/VE	12,00
YAMAHA	YZ/YZF/WR/WRF	125/250/450	00 ...	09.010.2	BL/RO/VE	12,00



tappi motore engine caps



09.125.0



std

brand	model	cc	year	description	code	color	price
HONDA	CRF	450	02 ...	std (2 pcs)	09.113.0	BL/NO/RO	22,00
		250	10 ...	std (2 pcs)	09.113.0	BL/NO/RO	22,00
			04 09	std (3 pcs)	09.114.0	BL/NO/RO	31,00
KAWASAKI	KXF	250	06 10	std (2 pcs)	09.118.0	BL/RO/VE	22,00
			11 ...	std (2 pcs)	09.117.0	BL/RO/VE	22,00
		450	06 ...	std (2 pcs)	09.117.0	BL/RO/VE	22,00
KTM	SXF	450/505	07 12	-	09.125.0	AR/NO	13,00
				std (1 pcs)	09.142.0	AR/NO	13,00
		350	11 15	std (1 pcs)	09.142.0	AR/NO	13,00
		250	13 15	std (1 pcs)	09.142.0	AR/NO	13,00
	250/350	16 ...	std (1 pcs)	09.147.0	AR	13,00 NEW!	
	SMR	450	08 12	std (1 pcs)	09.142.0	AR/NO	13,00
				-	09.125.0	AR/NO	13,00
HUSQVARNA	FC	250/350	14 15	std (1 pcs)	09.142.0	BL/NO	13,00
		250/350	14 ...	std (1 pcs)	09.142.0	BL/NO	13,00
		250/350	16 ...	std (1 pcs)	09.147.0	BL	13,00 NEW!
SUZUKI	RMZ	250	07 ...	std (2 pcs)	09.122.0	BL/RO	22,00
		450	05 ...	std (2 pcs)	09.122.0	BL/RO	22,00
YAMAHA	YZF	450	06 09	std (2 pcs)	09.115.0	BL/RO	22,00
			10 ...	std (2 pcs)	09.140.0	BL/RO	22,00
		250	06 13	std (2 pcs)	09.116.0	BL/RO	22,00
			14 ...	std (2 pcs)	09.140.0	BL/RO	22,00

coperchi filtro olio oil filter covers



09.135.0



09.126.0



brand	model	cc	year	code	color	price
KTM	SMR	450	08 12	09.126.0	AR	21,00
		450/505	07 12	09.126.0	AR	21,00
		450	16 ...	09.126.0	AR	21,00 NEW!
	SXF	250	13 ...	09.126.0	AR	21,00
			06 12	09.135.0	AR	21,00
	SXF/EXCF	350	11 ...	09.126.0	AR	21,00
	EXCF	250	07 13	09.135.0	AR	21,00
			14 ...	09.126.0	AR	21,00
		450	08 11	09.126.0	AR	21,00
	SX	450/525	00 06	09.135.0	AR	21,00
SMR	450/560	04 07	09.135.0	AR	21,00	
HUSQVARNA	FC/FE	250/350	14 ...	09.126.0	BL	21,00
	FC	450	16 ...	09.126.0	BL	21,00 NEW!



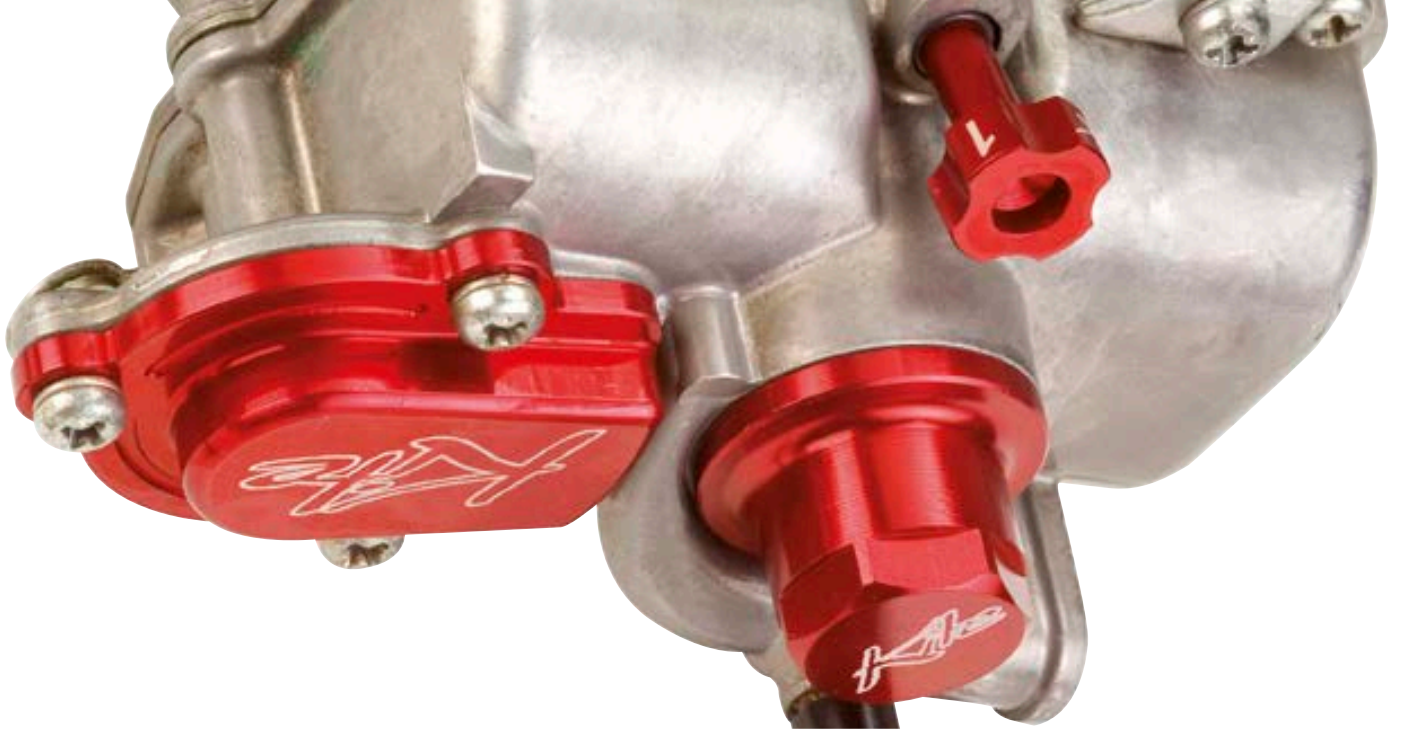
sfiate serbatoio benzina gas tank air vent valve

code	color	price
28.100.0	AR/BL/NO/RO/VE	9,00



serbatoio recupero liquidi liquid recovery tank

code	color	price
09.021.0	AR/BL/NO/RO/VE	36,00



accessori carburatore Keihin Keihin carburettor accessories

code	color	description	price
24.000.0	AR/BL/NO/RO/VE	tappo carburatore	17,00
24.002.0	AR/BL/NO/RO/VE	coperchio pompa ripresa	29,00
24.003.0	AR/BL/NO/RO/VE	vite regolazione aria	16,00
24.004.0	AR/BL/NO/RO/VE	kit carburatore 24.000.0 + 24.002.0 + 24.003.0	56,00



Valido per tutti i modelli 4T, tranne che per il CRF 250 07/09, CRF 450 08/09
Available for all 4STR models, except for CRF 250 07/09, CRF 450 08/09



bracciali freno-frizione e hot start brake-clutch clamp and hot start lever



brand	model	cc	year	description	code	color	price
NISSIN-BREMBO				bracciale+leva hot start/clamp+hot start	09.050.0		47,00
				bracciale freno-frizione/brake-clutch clamp	09.051.0	AR/BL/NO/RO/SI/VE	17,00
HONDA-YAMAHA SUZUKI-KAWASAKI				bracciale frizione cavo/clutch perch clamp	09.054.0	AR/BL/NO/RO/SI/VE	17,00
HUSQVARNA	TC/TE	250	10 13	coperchio frizione/clutch cover + hot start	17.060.0	AR/NO/RO	45,00
	TE	310	11 13				
KTM	SXF	250/450	10 10				
	EXCF	250	07 07				



coperchi anteriori front covers



17.045.0



17.041.0



17.040.0



17.046.0



17.042.0



17.063.0

brand	model	cc	year	description	code	color	price
HM	CRE/CREP	50/125	06 ...	freno/brake	17.045.0	BL/NO/RO	17,00
					17.046.0	NO/RO	17,00
HONDA	CR/CRF	125/250/450	00 ...	freno/brake	17.040.0	BL/NO/RO	17,00
	TC/TE	250	07 ...	freno-frizione/brake-clutch Brembo	17.063.0	BL/NO/RO	17,00
HUSQVARNA	tutti/all	tutte/all (no 85/125)	14 ...	freno-frizione/brake-clutch Brembo	17.063.0	BL/NO/RO	17,00
	TC	125	14 ...	frizione/clutch	17.064.0	AR/BL	17,00 NEW!
	FC	250/350/450	16 ...	frizione/clutch	17.064.0	AR/BL	17,00 NEW!
KAWASAKI	KX/KXF	85/125/250/450	03 ...	freno/brake	17.041.0	BL/RO/VE	17,00
			00 ...	freno/brake	17.063.0	AR/BL/NO	17,00
KTM	tutti/all	tutte/all	00 08	frizione/clutch Magura mod.163	17.042.0	AR/NO/RO	17,00
			06 08	frizione/clutch Magura mod.163	17.042.0	AR/NO/RO	17,00
	EXCF	250	10 ...	frizione/clutch Brembo	17.063.0	AR/BL/NO	17,00
			09 ...	frizione/clutch Brembo	17.063.0	AR/BL/NO	17,00
	SX/EXC	125/150	09 15	frizione/clutch Magura mod.167	17.064.0	AR/BL	17,00 NEW!
			09 ...	frizione/clutch Brembo	17.063.0	AR/BL/NO	17,00
			16 ...	frizione/clutch Brembo	17.063.0	AR/BL/NO	17,00 NEW!
	SXF	250/350	11 ...	frizione/clutch Brembo	17.063.0	AR/BL/NO	17,00
11 12			frizione/clutch Magura mod.167	17.064.0	AR/BL	17,00 NEW!	
BETA	RR	tutte/all (no 50/125 4T)	04 ...	freno/brake	17.040.0	BL/NO/RO	17,00
			13 ...	frizione/clutch	17.063.0	NO/RO	17,00
TM	MX/EN/MXF/ENF	tutte/all (no 85)	05 ...	freno/brake	17.040.0	BL/NO/RO	17,00
			09 ...	frizione/clutch Brembo	17.063.0	BL/NO/RO	17,00
SHERCO	SE/SEF	450/510	08 ...	freno-frizione/brake-clutch	17.063.0	BL/NO/RO	17,00
			08 11	freno-frizione/brake-clutch	17.063.0	BL/NO/RO	17,00
SUZUKI	RM/RMZ	125/250/450	00 ...	freno/brake	17.041.0	BL/RO/VE	17,00
YAMAHA	YZ/WR	125/250	04 07	freno/brake	17.041.0	BL/RO/VE	17,00
			08 ...	freno/brake	17.045.0	BL/RO	17,00
	YZF	250	04 06	freno/brake	17.041.0	BL/RO/VE	17,00
			07 ...	freno/brake	17.045.0	BL/RO	17,00
			04 07	freno/brake	17.041.0	BL/RO/VE	17,00
			08 ...	freno/brake	17.045.0	BL/RO	17,00
WRF	250/450	04 07	freno/brake	17.041.0	BL/RO/VE	17,00	



tiranti freno posteriore rear brake connecting rods

brand	model	cc	year	code	color	price
HONDA	CR/CRF	125/150/250/450	00 ...	09.001.0	BL/NO/RO	16,00
HM	CRE/SM	50	06 ...	09.003.0	BL/RO/VE	16,00
KAWASAKI	KX/KXF	125/250/450	00 ...	09.003.0	BL/RO/VE	16,00
			04 06	09.003.0	BL/RO/VE	16,00
SUZUKI	RMZ	250	07 ...	09.002.0	BL/RO	16,00
			05 ...	09.002.0	BL/RO	16,00
	RM	125/250	00 ...	09.003.0	BL/RO/VE	16,00
VALENTI	RME/SM	50	11 ...	09.003.0	BL/RO/VE	16,00
BETA	RR	tutte/all	10 ...	09.002.0	BL/RO	16,00
TM	Tutti/all	tutte/all	05 ...	09.002.0	BL/RO	16,00
YAMAHA	YZ/YZF/WR/WRF	tutte/all	00 ...	09.002.0	BL/RO	16,00





17.032.0



17.002.0



17.022.0



17.012.0

coperchi posteriori rear covers



brand	model	cc	year	code	color	price
HONDA	CR/CRF	125/250/450	00 ...	17.002.0	BL/NO/RO	17,00
VALENTI	RME/SM	50	11 ...	17.002.0	BL/NO/RO	17,00
HUSQVARNA	TC/FC/TE/FE/WR/CR	tutte/all (no 85)	07 ...	17.032.0	AR/NO/RO	17,00
KAWASAKI	KX/KXF	125/250/450	00 ...	17.022.0	BL/RO/VE	17,00
KTM	SX/SXF/EXC/EXCF	tutte/all (no 85)	04 ...	17.032.0	AR/NO/RO	17,00
SHERCO	SE/SEF	250/300	12 ...	17.032.0	BL/NO/RO	17,00
BETA	RR	tutte/all (no 50/125 4T)	04 09	17.032.0	BL/NO/RO	17,00
			10 ...	17.012.0	BL/NO/RO	17,00
TM	tutti/all	tutte/all (no 85)	05 ...	17.012.0	BL/RO	17,00
SUZUKI	tutti/all	tutte/all (no 85)	00 ...	17.022.0	BL/RO/VE	17,00
YAMAHA	tutti/all	tutte/all (no 85)	04 ...	17.012.0	BL/RO	17,00



17.030.0



17.000.0



17.020.0



17.010.0

serbatoi olio freno posteriore rear brake oil tanks



brand	model	cc	year	code	color	price
HONDA	CR/CRF	125/250/450	00 ...	17.000.0	BL/NO/RO	42,00
VALENTI	RME/SM	50	11 ...	17.000.0	BL/NO/RO	42,00
HUSQVARNA	TC/FC/TE/FE/WR/CR	tutte/all (no 85)	07 ...	17.030.0	AR/NO/RO	42,00
KAWASAKI	KX/KXF	125/250/450	00 ...	17.020.0	BL/RO/VE	42,00
KTM	SX/SXF/EXC/EXCF	tutte/all (no 85)	04 ...	17.030.0	AR/NO/RO	42,00
SHERCO	SE/SEF	250/300	12 ...	17.030.0	BL/NO/RO	42,00
TM	tutti/all	tutte/all (no 85)	05 ...	17.010.0	BL/RO	42,00
SUZUKI	tutti/all	tutte/all (no 85)	00 ...	17.020.0	BL/RO/VE	42,00
YAMAHA	tutti/all	tutte/all (no 85)	04 ...	17.010.0	BL/RO	42,00



TRIUMPH

ruote Tubeless Tubeless wheels

alpinq | TUBELESS STS

brand	model	year	description	code	color	price
TRIUMPH	BONNEVILLE T100	06 ...				
	SCRAMBLER	06 ...	anteriore/front	32.008.0	NO	590,00
	THRUXTON	06 ...				
	BONNEVILLE	09 ...	anteriore/front	32.017.0	NO	590,00
	BONNEVILLE T100	06 ...				
	SCRAMBLER	06 ...				
	THRUXTON	06 ...	posteriore/rear	32.009.0	NO	827,00
	BONNEVILLE	09 ..				





NAVIGAZIONE

TRIUMPH



BMW



ruote Tubeless Tubeless wheels

alpinq | TUBELESS STS

brand	model	year	description	code	color	price
BMW	F 800 GS	08 ...	anteriore/front	31.017.0	RO/TI	566,00
	F 800 GS	08 ...	posteriore/rear	31.018.0	RO/TI	800,00
	R 1200 GS	04 12	anteriore/front	31.107.0	NO/TI	712,00
	R 1200 GS ADVENTURE	06 13	anteriore/front	31.107.0	NO/TI	712,00
	R 1200 GS	04 12	posteriore/rear	31.108.0	NO/TI	654,00
	R 1200 GS ADVENTURE	06 13	posteriore/rear	31.108.0	NO/TI	654,00
	R 1200 GS	13 ...	anteriore/front	31.117.0	NO/TI	712,00
	R 1200 GS ADVENTURE	14 ...	anteriore/front	31.117.0	NO/TI	712,00
	R 1200 GS	13 ...	posteriore/rear	31.116.0	NO/TI	654,00
R 1200 GS ADVENTURE	14 ...	posteriore/rear	31.116.0	NO/TI	654,00	

(sconto/discount C)



piastre forcella triple clamps

brand	model	year	code	color	price
BMW	F 800 GS	08 11	31.020.0	RO/TI	319,00

(sconto/discount B)





pedane foot pegs

(sconto/discount B)

brand	model	year	code	color	price
BMW	F 800 GS	08 11	31.030.0	NO/RO/TI	152,00
	R 1200 GS	04 ...			
	R 1200 GS ADVENTURE	06 13			



accessori accessories BMW

(sconto/discount A)

brand	model	year	description	code	color	price
BMW	F 800 GS	08 ...	tappo olio/oil plugs	31.041.0	RO/TI	15,00
	F 800 R	09 ...				
	F 650 GS	10 ...	tirante freno posteriore	31.045.0	RO/TI	16,00
	F 800 GS	08 ...				
	F 800 GS	08 12	regolazione mono/mono handle	31.046.0	RO/TI	22,00
	F 800 R	09 12				
	F 650 GS	10 12				
	F 800 GS	08 12	contrappesi/balancers	31.047.0	RO/TI	33,00
	F 800 R	09 12				
	F 650 GS	10 12	contrappesi/balancers	31.049.0	NO	33,00
	F 800 GS	08 12				
	F 800 R	08 12	registro tendicatena/axle block	31.050.0	RO/TI	38,00
	F 650 GS	08 12			RO/TI	
	R 1200 GS	04 12	gas rapido/quick trottle	31.055.0	SI	48,00
	R 1200 GS	04 12	tappo testa/head cap	31.141.0	NO/TI	16,00
	R 1200 GS ADVENTURE	06 13	scivolo sella/saddle slider	31.145.0		15,00
	R 1200 GS	04 12				
R 1200 GS ADVENTURE	06 13	contrappesi/balancers	31.147.0	NO	33,00	
R 1200 GS ADVENTURE	06 13	regolazione mono/mono handle	31.149.0	NO/TI	22,00	



**21 WORLD
TITLES**
12 MOTOCROSS
6 ENDURO
3 SUPER ENDURO

**9 AMA
TITLES**
3 NATIONAL
3 SUPERCROSS
3 ENDURO CROSS

TEAM PARTNERS - SEASON 2016

World championship

US championship



VIA ALLE VILLETTE, 48 - 23826 MANDELLO DEL LARIO (LC)
TEL. +39.0341.701323 - FAX +39.0341.702850
INFO@KITE-PARTS.COM

follow us on [kite-parts](http://kite-parts.com)